

Product datasheet for **TA387414**

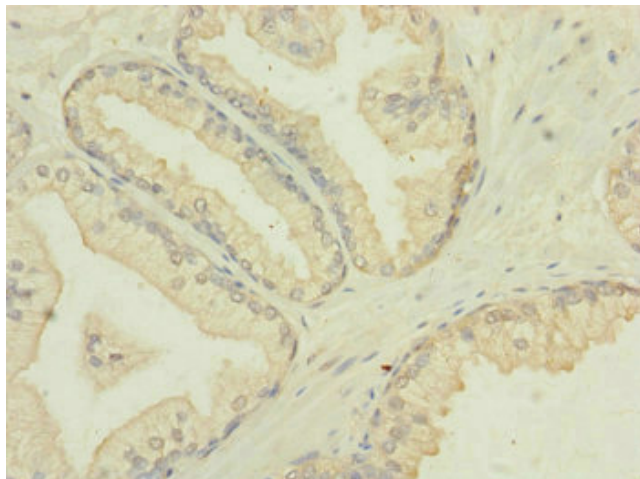
MTIF3 Rabbit Polyclonal Antibody

Product data:

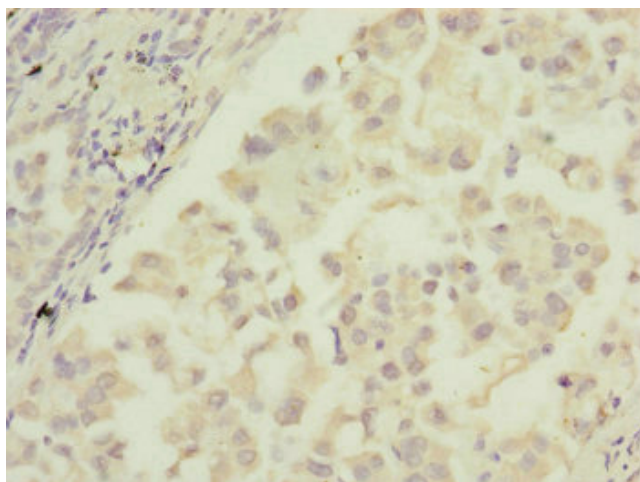
Product Type:	Primary Antibodies
Applications:	IHC, WB
Recommended Dilution:	Recommended dilution: WB:1:1000-1:5000, IHC:1:20-1:200
Reactivity:	Mouse, Rat, Human
Host:	Rabbit
Isotype:	IgG
Clonality:	Polyclonal
Immunogen:	Recombinant Human Translation initiation factor IF-3, mitochondrial protein (1-278AA)
Formulation:	PBS with 0.02% sodium azide, 50% glycerol, pH7.3.
Concentration:	lot specific
Purification:	Antigen Affinity Purified
Conjugation:	Unconjugated
Storage:	Upon receipt, store at -20°C or -80°C. Avoid repeated freeze.
Stability:	1 year from dispatch.
Database Link:	Q9H2K0
Background:	IF-3 binds to the 28S ribosomal subunit and shifts the equilibrium between 55S ribosomes and their 39S and 28S subunits in favor of the free subunits, thus enhancing the availability of 28S subunits on which protein synthesis initiation begins.



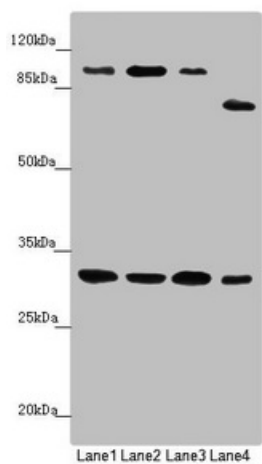
[View online »](#)

Product images:

Immunohistochemistry of paraffin-embedded human prostate cancer using TA387414 at dilution of 1:100



Immunohistochemistry of paraffin-embedded human lung cancer using TA387414 at dilution of 1:100



Western blot

All lanes: MTIF3 antibody at 1.15 $\mu\text{g}/\text{ml}$

Lane 1: Mouse small intestine tissue

Lane 2: Rat heart tissue

Lane 3: Mouse liver tissue

Lane 4: Hela whole cell lysate

Secondary

Goat polyclonal to rabbit IgG at 1/10000 dilution

Predicted band size: 32 kDa

Observed band size: 32, 100, 75 kDa