

## Product datasheet for **TA387411**

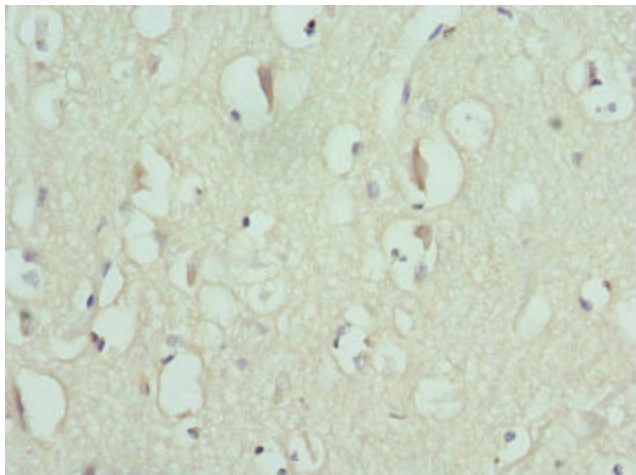
### ENTPD2 Rabbit Polyclonal Antibody

#### Product data:

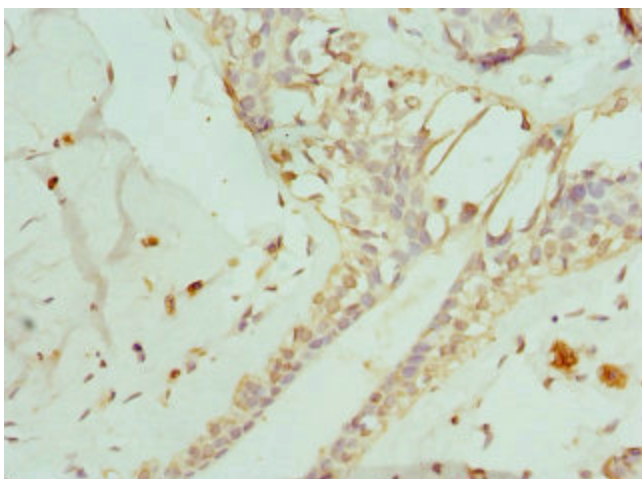
Product Type:	Primary Antibodies
Applications:	IHC, WB
Recommended Dilution:	Recommended dilution: WB:1:1000-1:5000, IHC:1:20-1:200
Reactivity:	Human
Host:	Rabbit
Isotype:	IgG
Clonality:	Polyclonal
Immunogen:	Recombinant Human Ectonucleoside triphosphate diphosphohydrolase 2 protein (28-268AA)
Formulation:	PBS with 0.02% sodium azide, 50% glycerol, pH7.3.
Concentration:	lot specific
Purification:	Antigen Affinity Purified
Conjugation:	Unconjugated
Storage:	Upon receipt, store at -20°C or -80°C. Avoid repeated freeze.
Stability:	1 year from dispatch.
Database Link:	<a href="#">Q9Y5L3</a>
Background:	In the nervous system, could hydrolyze ATP and other nucleotides to regulate purinergic neurotransmission. Hydrolyzes ADP only to a marginal extent. The order of activity with different substrates is ATP > GTP > CTP = ITP > UTP >> ADP = UDP.



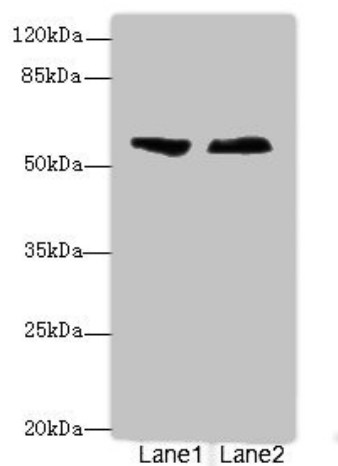
[View online »](#)

**Product images:**

Immunohistochemistry of paraffin-embedded human brain tissue using TA387411 at dilution of 1:100



Immunohistochemistry of paraffin-embedded human breast cancer using TA387411 at dilution of 1:100



Western blot

All lanes: ENTPD2 antibody at 3.6  $\mu$ g/ml

Lane 1: Human placenta tissue

Lane 2: U87 whole cell lysate

Secondary

Goat polyclonal to rabbit IgG at 1/10000 dilution

Predicted band size: 54, 52, 49 kDa

Observed band size: 54 kDa