

Product datasheet for **TA387408**

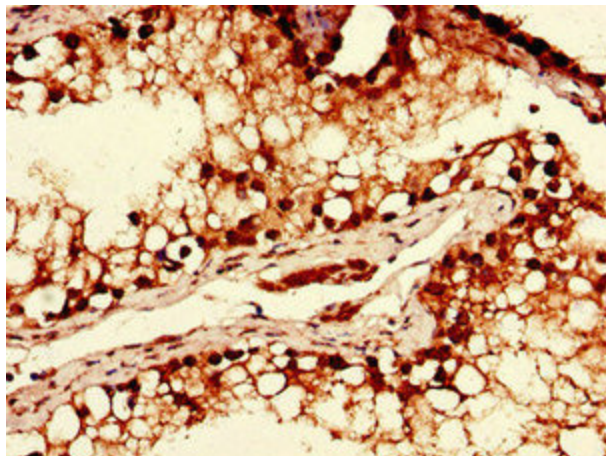
YTHDF2 Rabbit Polyclonal Antibody

Product data:

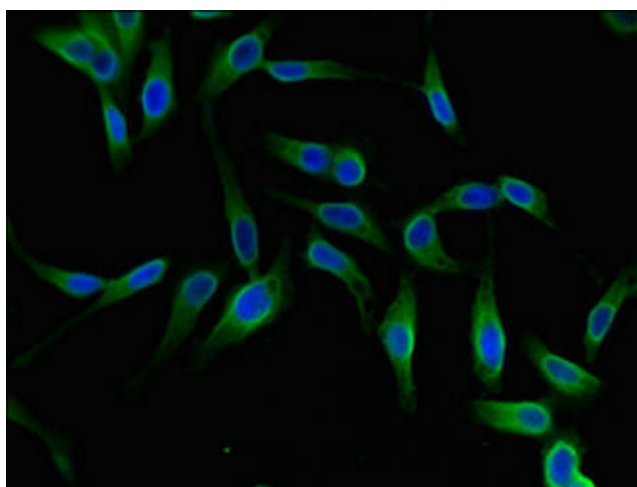
Product Type:	Primary Antibodies
Applications:	IF, IHC, WB
Recommended Dilution:	Recommended dilution: WB:1:2000-1:5000, IHC:1:20-1:200, IF:1:50-1:200
Reactivity:	Human
Host:	Rabbit
Isotype:	IgG
Clonality:	Polyclonal
Immunogen:	Recombinant Human YTH domain-containing family protein 2 protein (201-500AA)
Formulation:	Preservative: 0.03% Proclin 300 Constituents: 50% Glycerol, 0.01M PBS, PH 7.4
Concentration:	lot specific
Purification:	>95%, Protein G purified
Conjugation:	Unconjugated
Storage:	Upon receipt, store at -20°C or -80°C. Avoid repeated freeze.
Stability:	1 year from dispatch.
Database Link:	Q9Y5A9
Background:	Specifically recognizes and binds N6-methyladenosine (m6A)-containing RNAs, and regulates mRNA stability (PubMed:24284625, PubMed:26046440). M6A is a modification present at internal sites of mRNAs and some non-coding RNAs and plays a role in the efficiency of mRNA splicing, processing and stability (PubMed:22575960, PubMed:24284625, PubMed:25412658, PubMed:25412661). Acts as a regulator of mRNA stability: binding to m6A-containing mRNAs results in the localization to mRNA decay sites, such as processing bodies (P-bodies), leading to mRNA degradation (PubMed:24284625, PubMed:26046440).



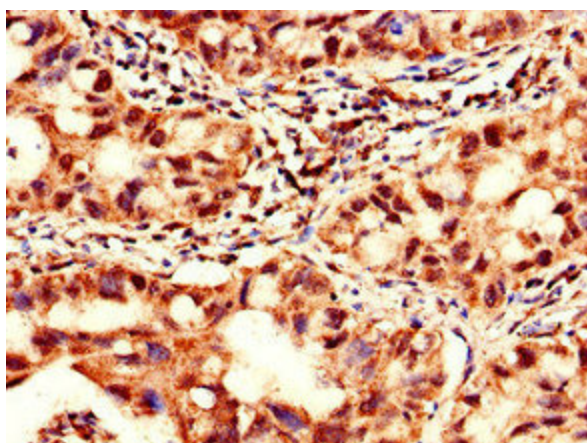
[View online »](#)

Product images:

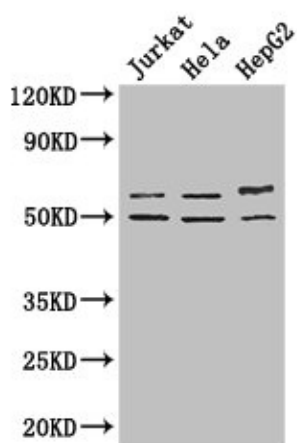
Immunohistochemistry of paraffin-embedded human testis tissue using TA387408 at dilution of 1:100



Immunofluorescent analysis of HeLa cells using TA387408 at dilution of 1:100 and Alexa Fluor 488-conjugated AffiniPure Goat Anti-Rabbit IgG(H+L)



Immunohistochemistry of paraffin-embedded human lung cancer using TA387408 at dilution of 1:100



Western Blot
 Positive WB detected in: Jurkat whole cell lysate, HeLa whole cell lysate, HepG2 whole cell lysate
 All lanes: YTHDF2 antibody at 2.7µg/ml
 Secondary
 Goat polyclonal to rabbit IgG at 1/50000 dilution
 Predicted band size: 63, 57 kDa
 Observed band size: 63, 50 kDa