

Product datasheet for **TA387407**

ASB4 Rabbit Polyclonal Antibody

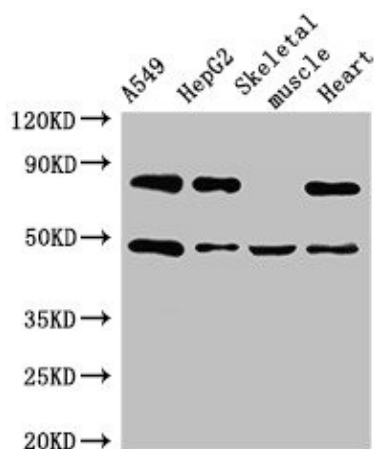
Product data:

Product Type:	Primary Antibodies
Applications:	WB
Recommended Dilution:	Recommended dilution: WB:1:500-1:5000
Reactivity:	Mouse, Rat, Human
Host:	Rabbit
Isotype:	IgG
Clonality:	Polyclonal
Immunogen:	Recombinant Human Ankyrin repeat and SOCS box protein 4 protein (166-321AA)
Formulation:	Preservative: 0.03% Proclin 300 Constituents: 50% Glycerol, 0.01M PBS, pH 7.4
Concentration:	lot specific
Purification:	>95%, Protein G purified
Conjugation:	Unconjugated
Storage:	Upon receipt, store at -20°C or -80°C. Avoid repeated freeze.
Stability:	1 year from dispatch.
Database Link:	Q9Y574
Background:	Probable substrate-recognition component of a SCF-like ECS (Elongin-Cullin-SOCS-box protein) E3 ubiquitin-protein ligase complex which mediates the ubiquitination and subsequent proteasomal degradation of target proteins. Promotes differentiation and maturation of the vascular lineage by an oxygen-dependent mechanism (By similarity).



[View online »](#)

Product images:



Western Blot

Positive WB detected in: A549 whole cell lysate,
HepG2 whole cell lysate, Mouse skeletal muscle
tissue, Rat heart tissue

All lanes: ASB4 antibody at 3 μ g/ml

Secondary

Goat polyclonal to rabbit IgG at 1/50000 dilution

Predicted band size: 49, 39 kDa

Observed band size: 49 kDa