

Product datasheet for **TA387406M**

SAMM50 Rabbit Polyclonal Antibody

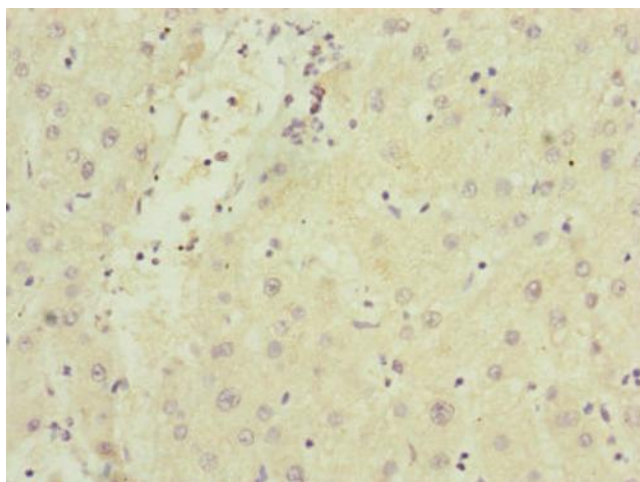
Product data:

Product Type:	Primary Antibodies
Applications:	IHC, WB
Recommended Dilution:	Recommended dilution: WB:1:1000-1:5000, IHC:1:20-1:200
Reactivity:	Mouse, Human
Host:	Rabbit
Isotype:	IgG
Clonality:	Polyclonal
Immunogen:	Recombinant Human Sorting and assembly machinery component 50 homolog protein (1-220AA)
Formulation:	PBS with 0.02% sodium azide, 50% glycerol, pH7.3.
Concentration:	lot specific
Purification:	Antigen Affinity Purified
Conjugation:	Unconjugated
Storage:	Upon receipt, store at -20°C or -80°C. Avoid repeated freeze.
Stability:	1 year from dispatch.
Database Link:	Q9Y512
Background:	Plays a crucial role in the maintenance of the structure of mitochondrial cristae and the proper assembly of the mitochondrial respiratory chain complexes (PubMed:22252321, PubMed:25781180). Required for the assembly of TOMM40 into the TOM complex (PubMed:15644312).

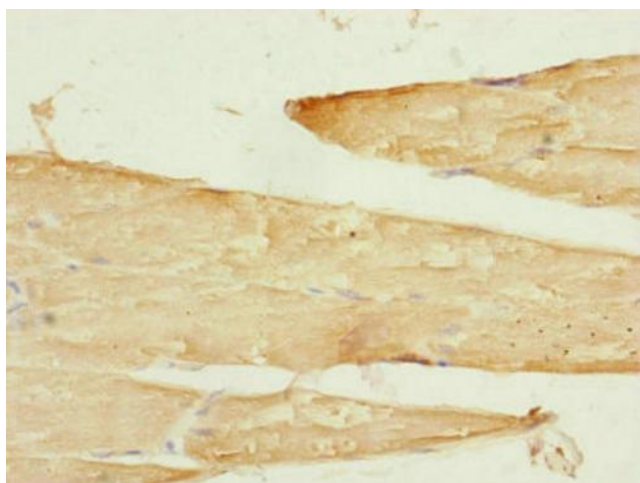


[View online »](#)

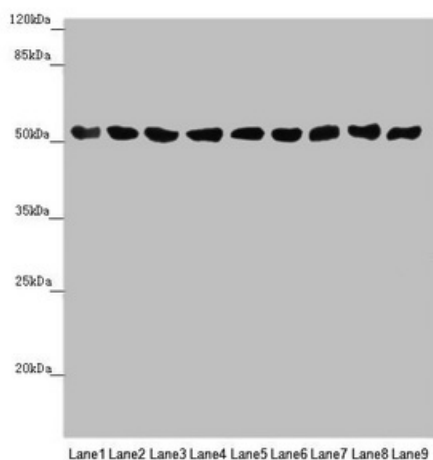
Product images:



Immunohistochemistry of paraffin-embedded human liver cancer using [TA387406] at dilution of 1:100



Immunohistochemistry of paraffin-embedded human skeletal muscle tissue using [TA387406] at dilution of 1:100



Western blot

All lanes: SAMM50 antibody at 0.98µg/ml

Lane 1: Mouse gonadal tissue

Lane 2: A375 whole cell lysate

Lane 3: A431 whole cell lysate

Lane 4: 293T whole cell lysate

Lane 5: Hela whole cell lysate

Lane 6: A549 whole cell lysate

Lane 7: HepG2 whole cell lysate

Lane 8: U251 whole cell lysate

Lane 9: LO2 whole cell lysate

Secondary

Goat polyclonal to rabbit IgG at 1/10000 dilution

Predicted band size: 52 kDa

Observed band size: 52 kDa