

## Product datasheet for **TA387406**

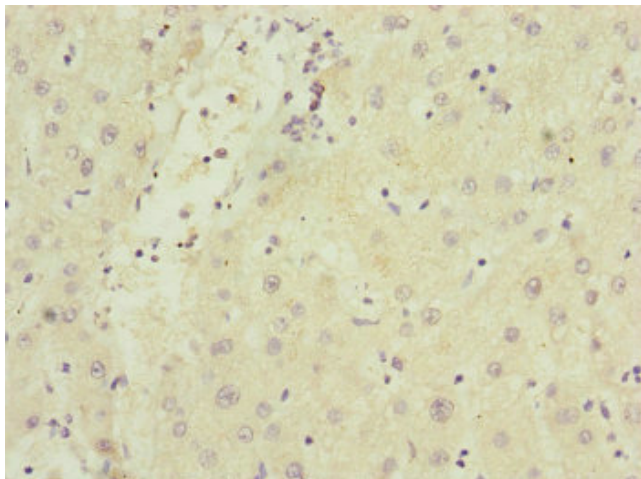
### **SAMM50 Rabbit Polyclonal Antibody**

#### **Product data:**

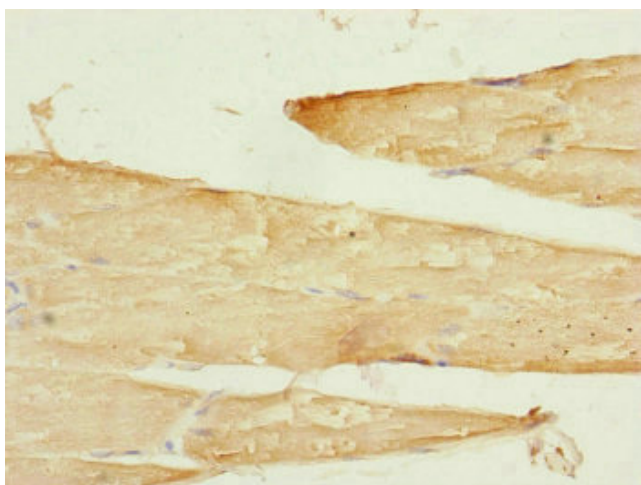
<b>Product Type:</b>	Primary Antibodies
<b>Applications:</b>	IHC, WB
<b>Recommended Dilution:</b>	Recommended dilution: WB:1:1000-1:5000, IHC:1:20-1:200
<b>Reactivity:</b>	Mouse, Human
<b>Host:</b>	Rabbit
<b>Isotype:</b>	IgG
<b>Clonality:</b>	Polyclonal
<b>Immunogen:</b>	Recombinant Human Sorting and assembly machinery component 50 homolog protein (1-220AA)
<b>Formulation:</b>	PBS with 0.02% sodium azide, 50% glycerol, pH7.3.
<b>Concentration:</b>	lot specific
<b>Purification:</b>	Antigen Affinity Purified
<b>Conjugation:</b>	Unconjugated
<b>Storage:</b>	Upon receipt, store at -20°C or -80°C. Avoid repeated freeze.
<b>Stability:</b>	1 year from dispatch.
<b>Database Link:</b>	<a href="#">Q9Y512</a>
<b>Background:</b>	Plays a crucial role in the maintenance of the structure of mitochondrial cristae and the proper assembly of the mitochondrial respiratory chain complexes (PubMed:22252321, PubMed:25781180). Required for the assembly of TOMM40 into the TOM complex (PubMed:15644312).



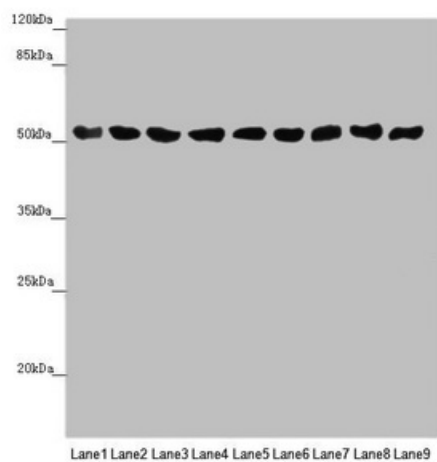
[View online »](#)

**Product images:**

Immunohistochemistry of paraffin-embedded human liver cancer using TA387406 at dilution of 1:100



Immunohistochemistry of paraffin-embedded human skeletal muscle tissue using TA387406 at dilution of 1:100

**Western blot**

All lanes: SAMM50 antibody at 0.98µg/ml

Lane 1: Mouse gonadal tissue

Lane 2: A375 whole cell lysate

Lane 3: A431 whole cell lysate

Lane 4: 293T whole cell lysate

Lane 5: Hela whole cell lysate

Lane 6: A549 whole cell lysate

Lane 7: HepG2 whole cell lysate

Lane 8: U251 whole cell lysate

Lane 9: LO2 whole cell lysate

Secondary

Goat polyclonal to rabbit IgG at 1/10000 dilution

Predicted band size: 52 kDa

Observed band size: 52 kDa