

## Product datasheet for **TA387405M**

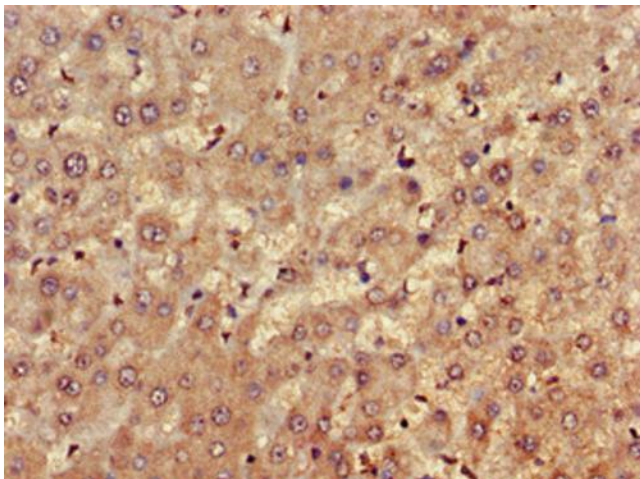
### **FARP1 Rabbit Polyclonal Antibody**

#### **Product data:**

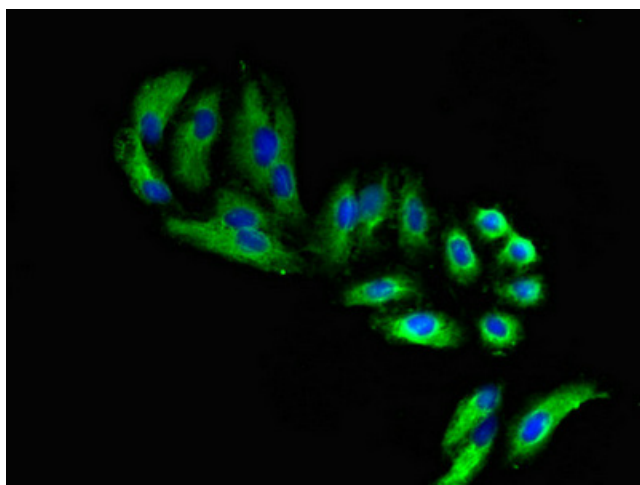
Product Type:	Primary Antibodies
Applications:	IF, IHC, WB
Recommended Dilution:	Recommended dilution: WB:1:500-1:5000, IHC:1:20-1:200, IF:1:50-1:200
Reactivity:	Human
Host:	Rabbit
Isotype:	IgG
Clonality:	Polyclonal
Immunogen:	Recombinant Human FERM, ARHGEF and pleckstrin domain-containing protein 1 protein (1-300AA)
Formulation:	Preservative: 0.03% Proclin 300 Constituents: 50% Glycerol, 0.01M PBS, PH 7.4
Concentration:	lot specific
Purification:	>95%, Protein G purified
Conjugation:	Unconjugated
Storage:	Upon receipt, store at -20°C or -80°C. Avoid repeated freeze.
Stability:	1 year from dispatch.
Database Link:	<a href="#">Q9Y4F1</a>
Background:	Functions as guanine nucleotide exchange factor for RAC1. May play a role in semaphorin signaling. Plays a role in the assembly and disassembly of dendritic filopodia, the formation of dendritic spines, regulation of dendrite length and ultimately the formation of synapses.



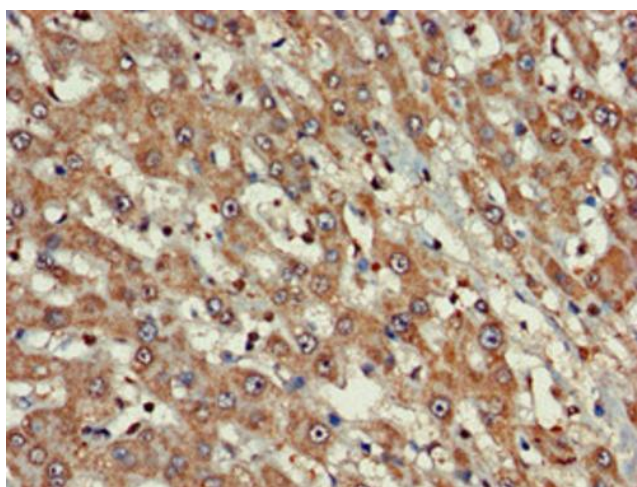
[View online »](#)

**Product images:**

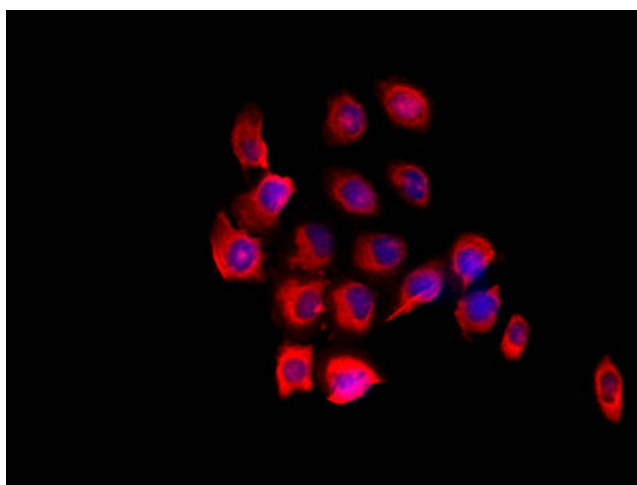
Immunohistochemistry of paraffin-embedded human liver tissue using [TA387405] at dilution of 1:100



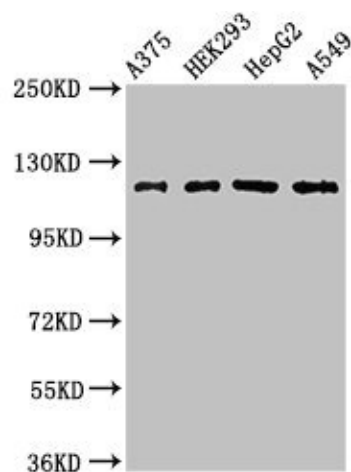
Immunofluorescent analysis of HepG2 cells using [TA387405] at dilution of 1:100 and Alexa Fluor 488-conjugated AffiniPure Goat Anti-Rabbit IgG(H+L)



Immunohistochemistry of paraffin-embedded human liver cancer using [TA387405] at dilution of 1:100



Immunofluorescent analysis of A549 cells using [TA387405] at dilution of 1:100 and Cy3-conjugated Goat Anti-Rabbit IgG



#### Western Blot

Positive WB detected in: A375 whole cell lysate, HEK293 whole cell lysate, HepG2 whole cell lysate, A549 whole cell lysate

All lanes: FARP1 antibody at 3 $\mu$ g/ml

Secondary

Goat polyclonal to rabbit IgG at 1/50000 dilution

Predicted band size: 119, 123, 15 kDa

Observed band size: 119 kDa