

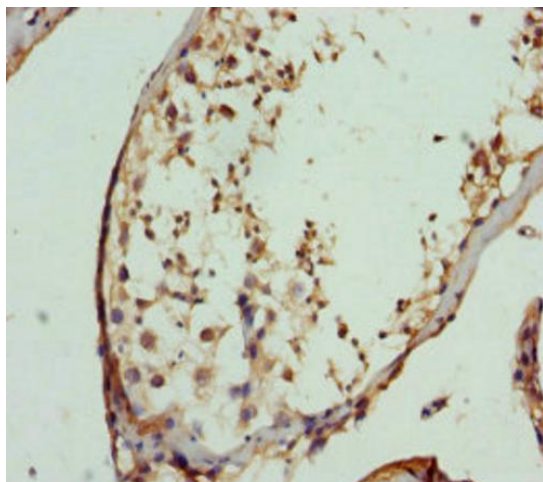
Product datasheet for **TA387404M**

FBXO7 Rabbit Polyclonal Antibody

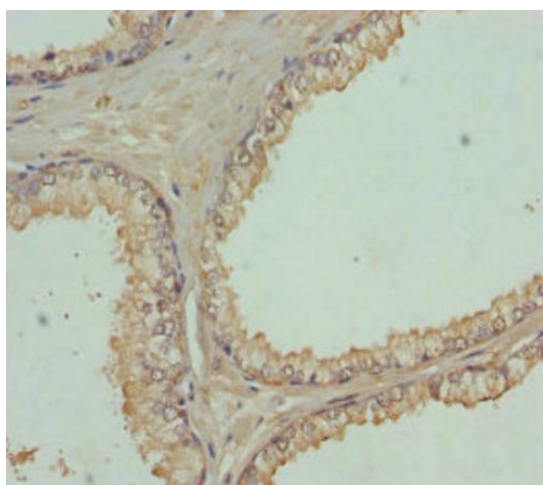
Product data:

| | |
|-----------------------|--|
| Product Type: | Primary Antibodies |
| Applications: | IHC, WB |
| Recommended Dilution: | Recommended dilution: WB:1:1000-1:5000, IHC:1:20-1:200 |
| Reactivity: | Mouse, Human |
| Host: | Rabbit |
| Isotype: | IgG |
| Clonality: | Polyclonal |
| Immunogen: | Recombinant Human F-box only protein 7 protein (353-522AA) |
| Formulation: | PBS with 0.02% sodium azide, 50% glycerol, pH7.3. |
| Concentration: | lot specific |
| Purification: | Antigen Affinity Purified |
| Conjugation: | Unconjugated |
| Storage: | Upon receipt, store at -20°C or -80°C. Avoid repeated freeze. |
| Stability: | 1 year from dispatch. |
| Database Link: | Q9Y3I1 |
| Background: | Substrate recognition component of a SCF (SKP1-CUL1-F-box protein) E3 ubiquitin-protein ligase complex which mediates the ubiquitination and subsequent proteasomal degradation of target proteins. Recognizes BIRC2 and DLGAP5. Plays a role downstream of PINK1 in the clearance of damaged mitochondria via selective autophagy (mitophagy) by targeting PARK2 to dysfunctional depolarized mitochondria. Promotes MFN1 ubiquitination. |

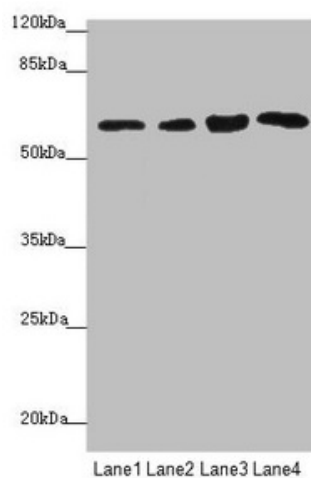
[View online »](#)

Product images:


Immunohistochemistry of paraffin-embedded human testis tissue using [TA387404] at dilution of 1:100



Immunohistochemistry of paraffin-embedded human prostate cancer using [TA387404] at dilution of 1:100



Western blot

All lanes: FBXO7 antibody at 3.97µg/ml

Lane 1: Mouse gonadal tissue

Lane 2: Jurkat whole cell lysate

Lane 3: 293T whole cell lysate

Lane 4: PC-3 whole cell lysate

Secondary

Goat polyclonal to rabbit IgG at 1/10000 dilution

Predicted band size: 59, 50, 46 kDa

Observed band size: 59 kDa