

Product datasheet for **TA387402M**

FAN1 Rabbit Polyclonal Antibody

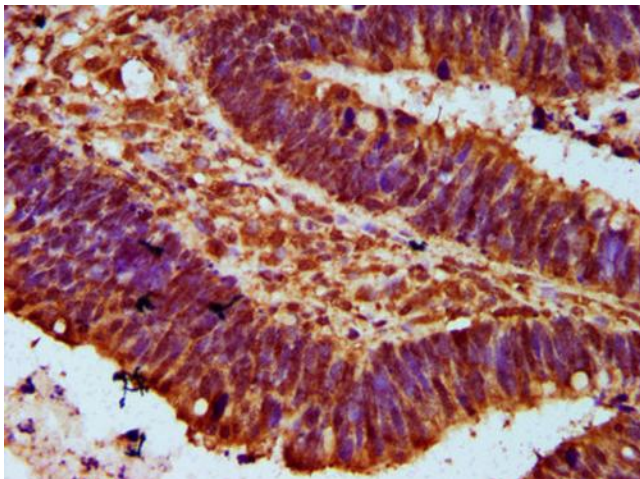
Product data:

Product Type:	Primary Antibodies
Applications:	IHC, WB
Recommended Dilution:	Recommended dilution: WB:1:500-1:5000, IHC:1:200-1:500
Reactivity:	Human
Host:	Rabbit
Isotype:	IgG
Clonality:	Polyclonal
Immunogen:	Recombinant Human Fanconi-associated nuclease 1 protein (167-373AA)
Formulation:	Preservative: 0.03% Proclin 300 Constituents: 50% Glycerol, 0.01M PBS, pH 7.4
Concentration:	lot specific
Purification:	>95%, Protein G purified
Conjugation:	Unconjugated
Storage:	Upon receipt, store at -20°C or -80°C. Avoid repeated freeze.
Stability:	1 year from dispatch.
Database Link:	Q9Y2M0
Background:	Nuclease required for the repair of DNA interstrand cross-links (ICL) recruited at sites of DNA damage by monoubiquitinated FANCD2. Specifically involved in repair of ICL-induced DNA breaks by being required for efficient homologous recombination, probably in the resolution of homologous recombination intermediates (PubMed:20603015, PubMed:20603016, PubMed:20603073, PubMed:20671156, PubMed:24981866, PubMed:25430771). Not involved in DNA double-strand breaks resection (PubMed:20603015, PubMed:20603016). Acts as a 5'-3' exonuclease that anchors at a cut end of DNA and cleaves DNA successively at every third nucleotide, allowing to excise an ICL from one strand through flanking incisions. Probably keeps excising with 3'-flap annealing until it reaches and unhooks the ICL (PubMed:25430771). Acts at sites that have a 5'-terminal phosphate anchor at a nick or a 1- or 2-nucleotide flap and is augmented by a 3' flap (PubMed:25430771). Also has endonuclease activity toward 5'-flaps (PubMed:20603015, PubMed:20603016, PubMed:24981866).

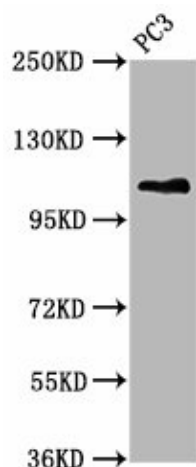


[View online »](#)

Product images:



IHC image of [TA387402] diluted at 1:300 and staining in paraffin-embedded human ovarian cancer performed on a Leica Bond™ system. After dewaxing and hydration, antigen retrieval was mediated by high pressure in a citrate buffer (pH 6.0). Section was blocked with 10% normal goat serum 30min at RT. Then primary antibody (1% BSA) was incubated at 4°C overnight. The primary is detected by a biotinylated secondary antibody and visualized using an HRP conjugated SP system.



Western Blot

Positive WB detected in: PC-3 whole cell lysate

All lanes: FAN1 antibody at 5.3µg/ml

Secondary

Goat polyclonal to rabbit IgG at 1/50000 dilution

Predicted band size: 115, 60 kDa

Observed band size: 115 kDa