

## Product datasheet for **TA387401**

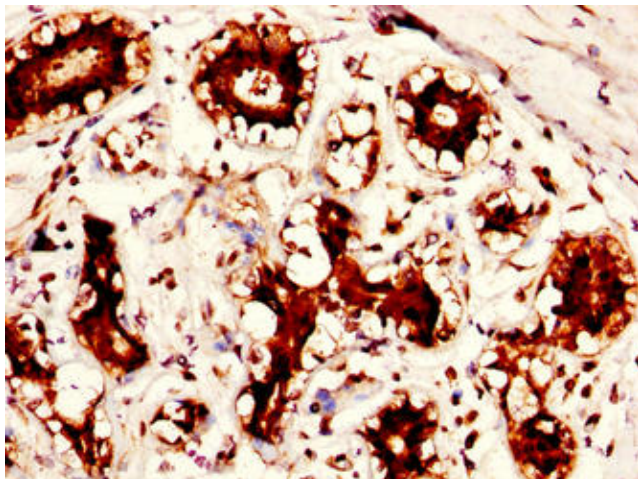
### **PADI2 Rabbit Polyclonal Antibody**

#### **Product data:**

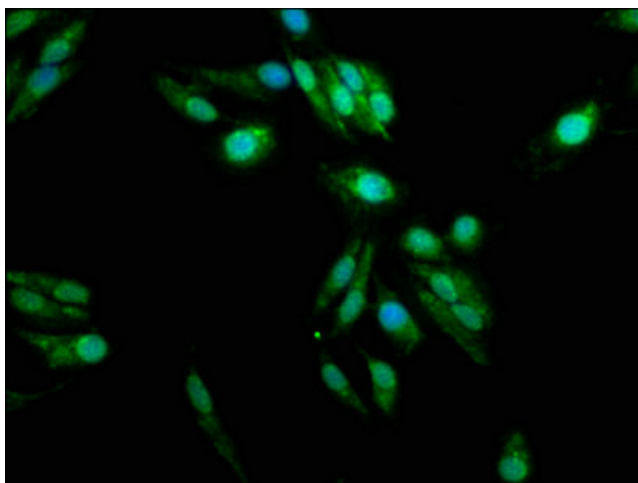
|                              |  |
|------------------------------|--|
| <b>Product Type:</b>         | Primary Antibodies   |
| <b>Applications:</b>         | IF, IHC, WB  |
| <b>Recommended Dilution:</b> | Recommended dilution: WB:1:500-1:5000, IHC:1:200-1:500, IF:1:50-1:200            |
| <b>Reactivity:</b>           | Human  |
| <b>Host:</b>                 | Rabbit   |
| <b>Isotype:</b>              | IgG  |
| <b>Clonality:</b>            | Polyclonal   |
| <b>Immunogen:</b>            | Recombinant Human Protein-arginine deiminase type-2 protein (1-665AA)            |
| <b>Formulation:</b>          | Preservative: 0.03% Proclin 300<br>Constituents: 50% Glycerol, 0.01M PBS, PH 7.4 |
| <b>Concentration:</b>        | lot specific   |
| <b>Purification:</b>         | >95%, Protein G purified   |
| <b>Conjugation:</b>          | Unconjugated   |
| <b>Storage:</b>              | Upon receipt, store at -20°C or -80°C. Avoid repeated freeze.                    |
| <b>Stability:</b>            | 1 year from dispatch.  |
| <b>Database Link:</b>        | <a href="#">Q9Y2J8</a>   |
| <b>Background:</b>           | Catalyzes the deimination of arginine residues of proteins.                      |



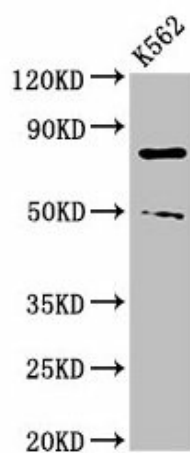
[View online »](#)

**Product images:**

IHC image of TA387401 diluted at 1:300 and staining in paraffin-embedded human breast cancer performed on a Leica Bond™ system. After dewaxing and hydration, antigen retrieval was mediated by high pressure in a citrate buffer (pH 6.0). Section was blocked with 10% normal goat serum 30min at RT. Then primary antibody (1% BSA) was incubated at 4°C overnight. The primary is detected by a biotinylated secondary antibody and visualized using an HRP conjugated SP system.



Immunofluorescence staining of HeLa cells with TA387401 at 1:100, counter-stained with DAPI. The cells were fixed in 4% formaldehyde, permeabilized using 0.2% Triton X-100 and blocked in 10% normal Goat Serum. The cells were then incubated with the antibody overnight at 4°C. The secondary antibody was Alexa Fluor 488-conjugated AffiniPure Goat Anti-Rabbit IgG(H+L).



Western Blot

Positive WB detected in: K562 whole cell lysate

All lanes: PADI2 antibody at 3 $\mu$ g/ml

Secondary

Goat polyclonal to rabbit IgG at 1/50000 dilution

Predicted band size: 76, 50 kDa

Observed band size: 76, 50 kDa