

Product datasheet for **TA387399M**

LHX6 Rabbit Polyclonal Antibody

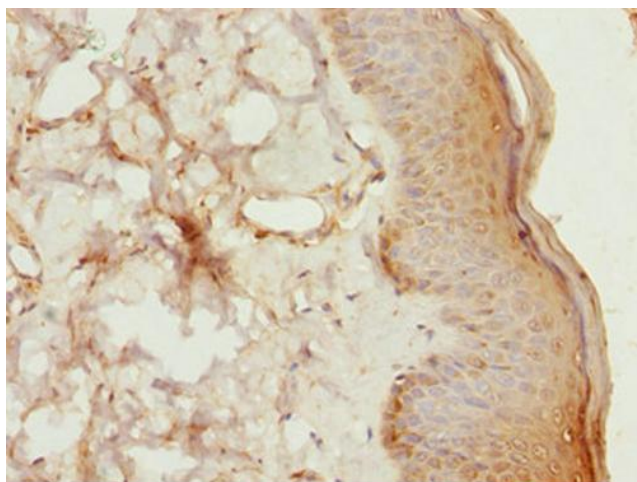
Product data:

Product Type:	Primary Antibodies
Applications:	IHC, WB
Recommended Dilution:	Recommended dilution: WB:1:1000-1:5000, IHC:1:20-1:200
Reactivity:	Mouse, Human
Host:	Rabbit
Isotype:	IgG
Clonality:	Polyclonal
Immunogen:	Recombinant Human LIM/homeobox protein Lhx6 protein (114-363AA)
Formulation:	PBS with 0.02% sodium azide, 50% glycerol, pH7.3.
Concentration:	lot specific
Purification:	Antigen Affinity Purified
Conjugation:	Unconjugated
Storage:	Upon receipt, store at -20°C or -80°C. Avoid repeated freeze.
Stability:	1 year from dispatch.
Database Link:	Q9UPM6
Background:	Probable transcription factor required for the expression of a subset of genes involved in interneurons migration and development. Functions in the specification of cortical interneuron subtypes and in the migration of GABAergic interneuron precursors from the subpallium to the cerebral cortex (By similarity).

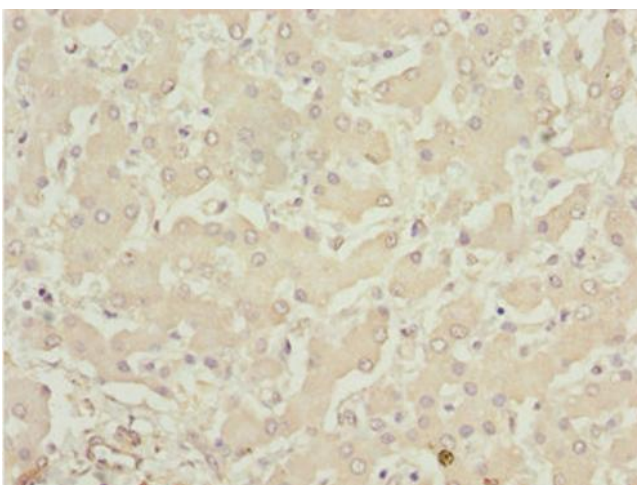


[View online »](#)

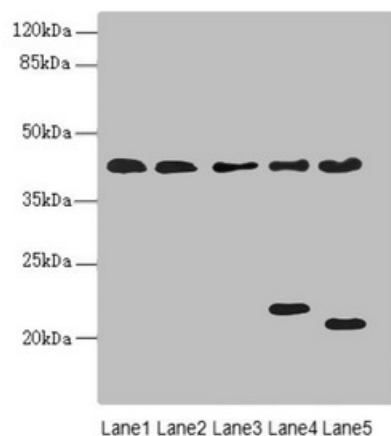
Product images:



Immunohistochemistry of paraffin-embedded human skin tissue using [TA387399] at dilution of 1:100



Immunohistochemistry of paraffin-embedded human liver tissue using [TA387399] at dilution of 1:100



Western blot

All lanes: LHX6 antibody at 3.02µg/ml

Lane 1: HepG2 whole cell lysate

Lane 2: U87 whole cell lysate

Lane 3: NIH/3T3 whole cell lysate

Lane 4: Mouse brain tissue

Lane 5: Mouse liver tissue

Secondary

Goat polyclonal to rabbit IgG at 1/10000 dilution

Predicted band size: 41, 39, 44, 42, 20 kDa

Observed band size: 41, 22, 20 kDa