

Product datasheet for **TA387398**

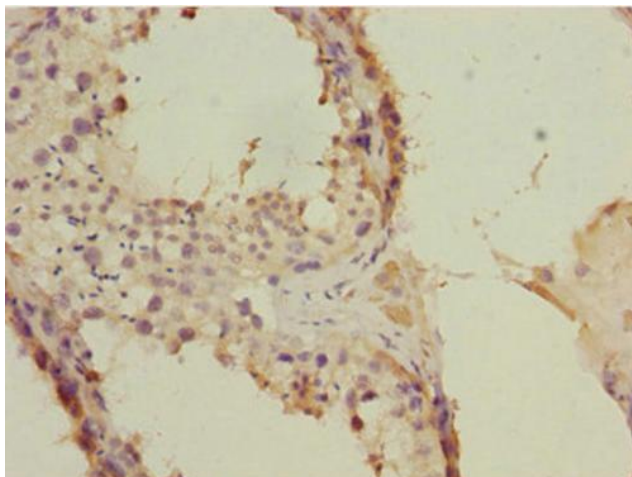
FLVCR2 Rabbit Polyclonal Antibody

Product data:

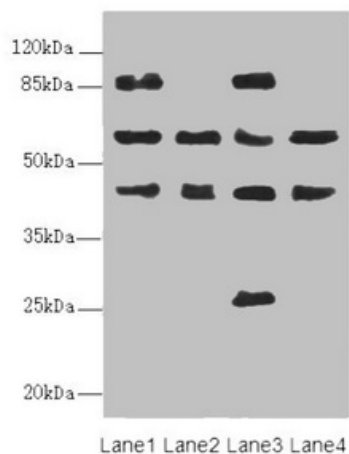
Product Type:	Primary Antibodies
Applications:	IHC, WB
Recommended Dilution:	Recommended dilution: WB:1:1000-1:5000, IHC:1:20-1:200
Reactivity:	Mouse, Human
Host:	Rabbit
Isotype:	IgG
Clonality:	Polyclonal
Immunogen:	Recombinant Human Feline leukemia virus subgroup C receptor-related protein 2 protein (1-100AA)
Formulation:	PBS with 0.02% sodium azide, 50% glycerol, pH7.3.
Concentration:	lot specific
Purification:	Antigen Affinity Purified
Conjugation:	Unconjugated
Storage:	Upon receipt, store at -20°C or -80°C. Avoid repeated freeze.
Stability:	1 year from dispatch.
Database Link:	Q9UPI3
Background:	Acts as an importer of heme. Also acts as a transporter for a calcium-chelator complex, important for growth and calcium metabolism.



[View online »](#)

Product images:


Immunohistochemistry of paraffin-embedded human testis tissue using TA387398 at dilution of 1:100


Western blot

All lanes: FLVCR2 antibody at 0.89 μ g/ml

Lane 1: MCF-7 whole cell lysate

Lane 2: A549 whole cell lysate

Lane 3: Mouse lung tissue

Lane 4: Mouse liver tissue

Secondary

Goat polyclonal to rabbit IgG at 1/10000 dilution

Predicted band size: 58, 36 kDa

Observed band size: 58, 86, 45, 26 kDa