

## Product datasheet for **TA387397**

### **ZNF232 Rabbit Polyclonal Antibody**

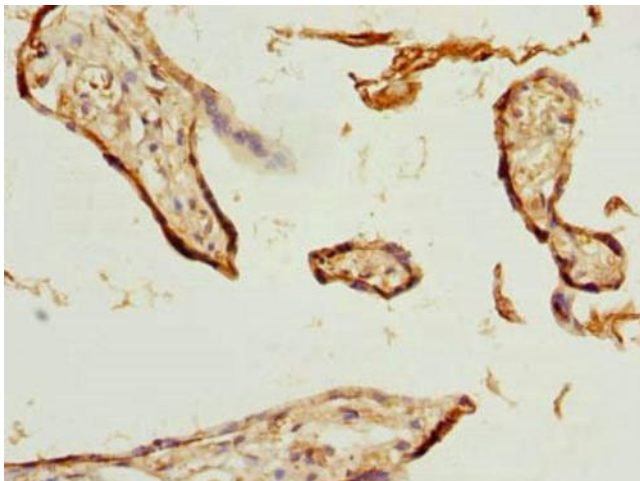
#### **Product data:**

|                       |  |
|-----------------------|--|
| Product Type:         | Primary Antibodies   |
| Applications:         | IHC, WB  |
| Recommended Dilution: | Recommended dilution: WB:1:500-1:2000, IHC:1:20-1:200                            |
| Reactivity:           | Mouse, Human   |
| Host:                 | Rabbit   |
| Isotype:              | IgG  |
| Clonality:            | Polyclonal   |
| Immunogen:            | Recombinant Human Zinc finger protein 232 protein (1-417AA)                      |
| Formulation:          | Preservative: 0.03% Proclin 300<br>Constituents: 50% Glycerol, 0.01M PBS, PH 7.4 |
| Concentration:        | lot specific   |
| Purification:         | Antigen Affinity Purified  |
| Conjugation:          | Unconjugated   |
| Storage:              | Upon receipt, store at -20°C or -80°C. Avoid repeated freeze.                    |
| Stability:            | 1 year from dispatch.  |
| Database Link:        | <a href="#">Q9UNY5</a>   |
| Background:           | May be involved in transcriptional regulation.                                   |

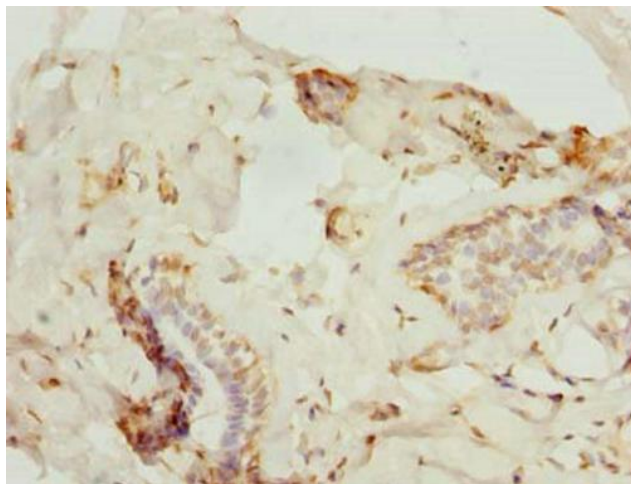


[View online »](#)

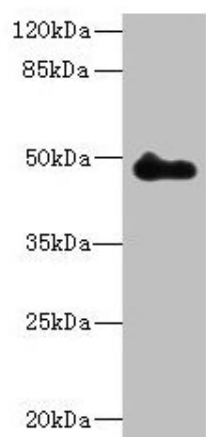
## Product images:



Immunohistochemistry of paraffin-embedded human placenta tissue using TA387397 at dilution of 1:100



Immunohistochemistry of paraffin-embedded human breast cancer using TA387397 at dilution of 1:100



Western blot

All lanes: ZNF232 antibody at 0.8 $\mu$ g/ml + Mouse heart tissue

Secondary

Goat polyclonal to rabbit IgG at 1/10000 dilution

Predicted band size: 48, 47 kDa

Observed band size: 48 kDa