

Product datasheet for **TA387396M**

PSMD13 Rabbit Polyclonal Antibody

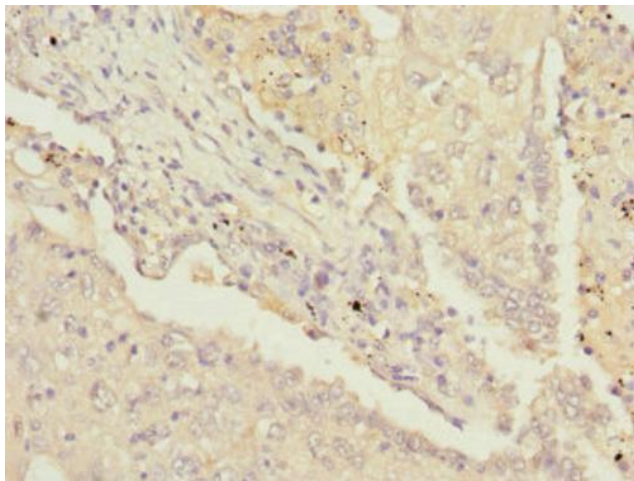
Product data:

Product Type:	Primary Antibodies
Applications:	IHC, WB
Recommended Dilution:	Recommended dilution: WB:1:1000-1:5000, IHC:1:20-1:200
Reactivity:	Mouse, Human
Host:	Rabbit
Isotype:	IgG
Clonality:	Polyclonal
Immunogen:	Recombinant Human 26S proteasome non-ATPase regulatory subunit 13 protein (1-250AA)
Formulation:	PBS with 0.02% sodium azide, 50% glycerol, pH7.3.
Concentration:	lot specific
Purification:	Antigen Affinity Purified
Conjugation:	Unconjugated
Storage:	Upon receipt, store at -20°C or -80°C. Avoid repeated freeze.
Stability:	1 year from dispatch.
Database Link:	Q9UNM6
Background:	Acts as a regulatory subunit of the 26S proteasome which is involved in the ATP-dependent degradation of ubiquitinated proteins.

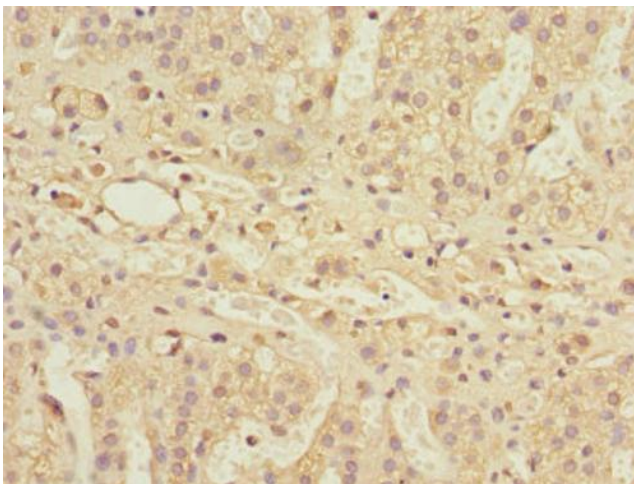


[View online »](#)

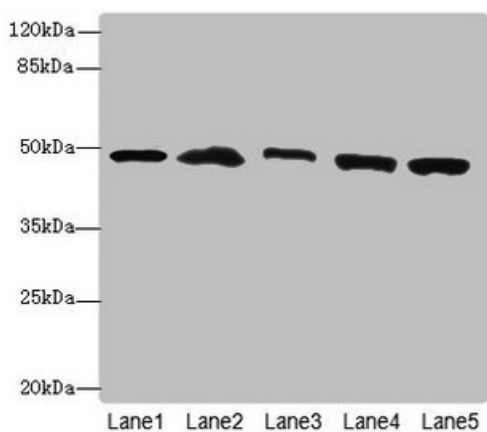
Product images:



Immunohistochemistry of paraffin-embedded human lung cancer using [TA387396] at dilution of 1:100



Immunohistochemistry of paraffin-embedded human adrenal gland tissue using [TA387396] at dilution of 1:100



Western blot

All lanes: PSMD13antibody at 3.42 μ g/ml

Lane 1: Mouse lung tissue

Lane 2: 293T whole cell lysate

Lane 3: Hela whole cell lysate

Lane 4: HepG2 whole cell lysate

Lane 5: Jurkat whole cell lysate

Secondary

Goat polyclonal to rabbit IgG at 1/10000 dilution

Predicted band size: 43 kDa

Observed band size: 43 kDa