

## Product datasheet for **TA387395**

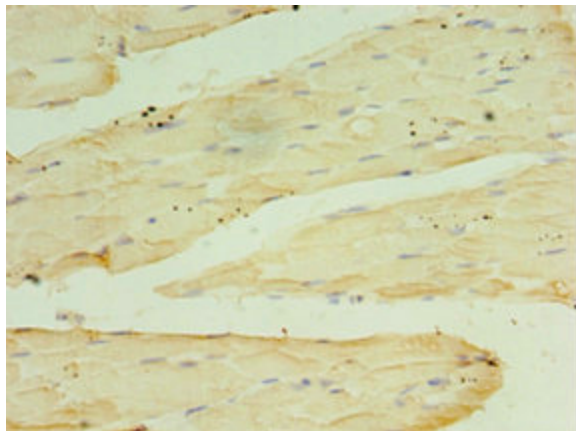
### **RPH3AL Rabbit Polyclonal Antibody**

#### **Product data:**

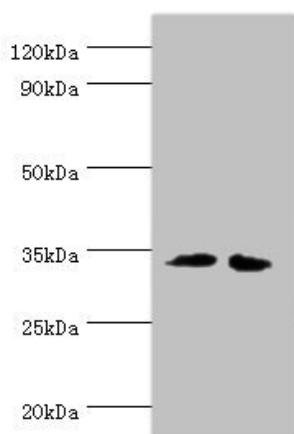
<b>Product Type:</b>	Primary Antibodies
<b>Applications:</b>	IHC, WB
<b>Recommended Dilution:</b>	Recommended dilution: WB:1:500-1:2000, IHC:1:20-1:200
<b>Reactivity:</b>	Human
<b>Host:</b>	Rabbit
<b>Isotype:</b>	IgG
<b>Clonality:</b>	Polyclonal
<b>Immunogen:</b>	Recombinant Human Rab effector Noc2 protein (161-315AA)
<b>Formulation:</b>	PBS with 0.02% sodium azide, 50% glycerol, pH7.3.
<b>Concentration:</b>	lot specific
<b>Purification:</b>	Antigen Affinity Purified
<b>Conjugation:</b>	Unconjugated
<b>Storage:</b>	Upon receipt, store at -20°C or -80°C. Avoid repeated freeze.
<b>Stability:</b>	1 year from dispatch.
<b>Database Link:</b>	<a href="#">Q9UNE2</a>
<b>Background:</b>	Rab GTPase effector involved in the late steps of regulated exocytosis, both in endocrine and exocrine cells (By similarity). Acts as a potential RAB3B effector protein in epithelial cells.



[View online »](#)

**Product images:**

Immunohistochemistry of paraffin-embedded human skeletal muscle tissue using TA387395 at dilution of 1:100



Western blot  
All lanes: RPH3AL antibody at 12 $\mu$ g/ml  
Lane 1: LO2 whole cell lysate  
Lane 2: K562 whole cell lysate  
Secondary  
Goat polyclonal to rabbit IgG at 1/10000 dilution  
Predicted band size: 35, 32 kDa  
Observed band size: 35 kDa