

Product datasheet for **TA387394M**

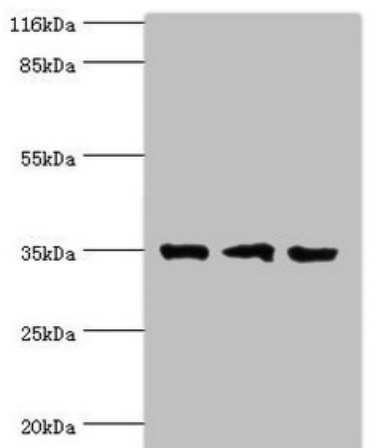
RPH3AL Rabbit Polyclonal Antibody

Product data:

Product Type:	Primary Antibodies
Applications:	WB
Recommended Dilution:	Recommended dilution: WB:1:1000-1:5000
Reactivity:	Rat, Human
Host:	Rabbit
Isotype:	IgG
Clonality:	Polyclonal
Immunogen:	Recombinant Human Rab effector Noc2 protein (1-315AA)
Formulation:	Preservative: 0.03% Proclin 300 Constituents: 50% Glycerol, 0.01M PBS, PH 7.4
Concentration:	lot specific
Purification:	>95%, Protein G purified
Conjugation:	Unconjugated
Storage:	Upon receipt, store at -20°C or -80°C. Avoid repeated freeze.
Stability:	1 year from dispatch.
Database Link:	Q9UNE2
Background:	Rab GTPase effector involved in the late steps of regulated exocytosis, both in endocrine and exocrine cells By similarity. Acts as a potential RAB3B effector protein in epithelial cells.



[View online »](#)

Product images:


Western blot

All lanes: RPH3AL antibody at 2 μ g/ml

Lane 1: Rat liver tissue

Lane 2: K562 whole cell lysate

Lane 3: A549 whole cell lysate

Secondary

Goat polyclonal to rabbit IgG at 1/10000 dilution

Predicted band size: 35, 32 kDa

Observed band size: 35 kDa