

Product datasheet for **TA387394**

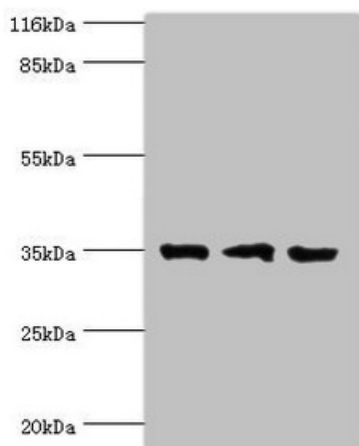
RPH3AL Rabbit Polyclonal Antibody

Product data:

| | |
|------------------------------|---|
| Product Type: | Primary Antibodies |
| Applications: | WB |
| Recommended Dilution: | Recommended dilution: WB:1:1000-1:5000 |
| Reactivity: | Rat, Human |
| Host: | Rabbit |
| Isotype: | IgG |
| Clonality: | Polyclonal |
| Immunogen: | Recombinant Human Rab effector Noc2 protein (1-315AA) |
| Formulation: | Preservative: 0.03% Proclin 300 Constituents: 50% Glycerol, 0.01M PBS, PH 7.4 |
| Concentration: | lot specific |
| Purification: | >95%, Protein G purified |
| Conjugation: | Unconjugated |
| Storage: | Upon receipt, store at -20°C or -80°C. Avoid repeated freeze. |
| Stability: | 1 year from dispatch. |
| Database Link: | Q9UNE2 |
| Background: | Rab GTPase effector involved in the late steps of regulated exocytosis, both in endocrine and exocrine cells By similarity. Acts as a potential RAB3B effector protein in epithelial cells. |



[View online »](#)

Product images:

Western blot

All lanes: RPH3AL antibody at 2 μ g/ml

Lane 1: Rat liver tissue

Lane 2: K562 whole cell lysate

Lane 3: A549 whole cell lysate

Secondary

Goat polyclonal to rabbit IgG at 1/10000 dilution

Predicted band size: 35, 32 kDa

Observed band size: 35 kDa