

Product datasheet for **TA387392**

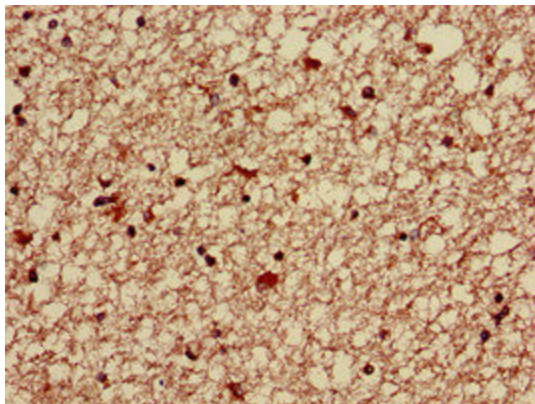
ABT1 Rabbit Polyclonal Antibody

Product data:

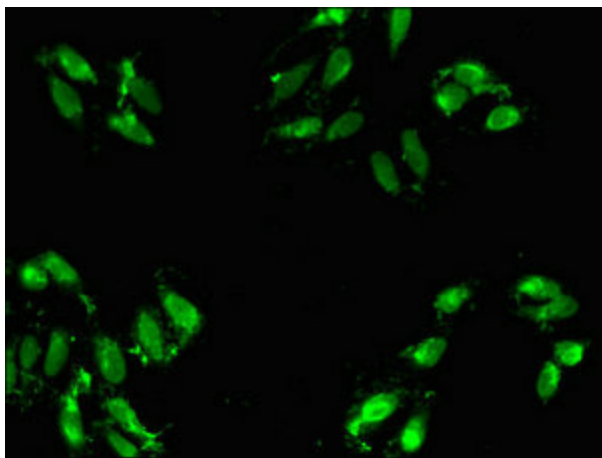
Product Type:	Primary Antibodies
Applications:	IF, IHC, WB
Recommended Dilution:	Recommended dilution: WB:1:500-1:5000, IHC:1:20-1:200, IF:1:50-1:200
Reactivity:	Mouse, Human
Host:	Rabbit
Isotype:	IgG
Clonality:	Polyclonal
Immunogen:	Recombinant Human Activator of basal transcription 1 protein (197-270AA)
Formulation:	Preservative: 0.03% Proclin 300 Constituents: 50% Glycerol, 0.01M PBS, pH 7.4
Concentration:	lot specific
Purification:	>95%, Protein G purified
Conjugation:	Unconjugated
Storage:	Upon receipt, store at -20°C or -80°C. Avoid repeated freeze.
Stability:	1 year from dispatch.
Database Link:	Q9ULW3
Background:	Could be a novel TATA-binding protein (TBP) which can function as a basal transcription activator. Can act as a regulator of basal transcription for class II genes (By similarity).



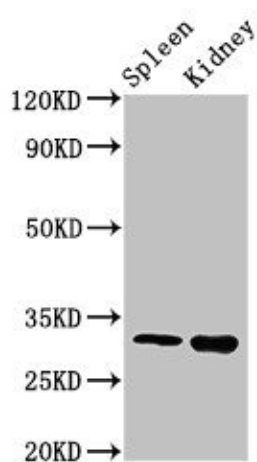
[View online »](#)

Product images:

Immunohistochemistry of paraffin-embedded human brain tissue using TA387392 at dilution of 1:100



Immunofluorescent analysis of HeLa cells using TA387392 at dilution of 1:100 and Alexa Fluor 488-conjugated AffiniPure Goat Anti-Rabbit IgG(H+L)



Western Blot

Positive WB detected in: Mouse spleen tissue,
Mouse kidney tissue

All lanes: ABT1 antibody at 3 μ g/ml

Secondary

Goat polyclonal to rabbit IgG at 1/50000 dilution

Predicted band size: 32 kDa

Observed band size: 32 kDa