

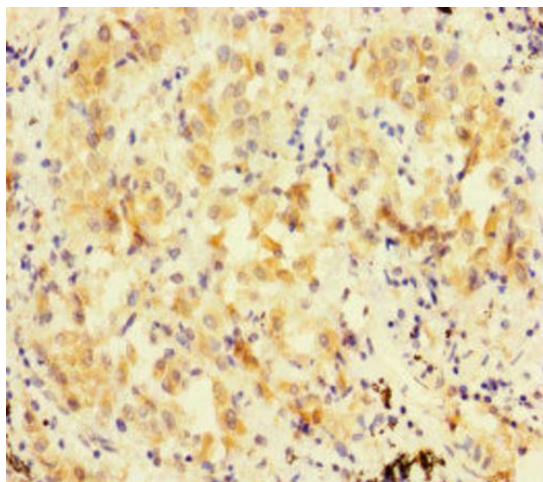
Product datasheet for **TA387388M**

FBXL21 Rabbit Polyclonal Antibody

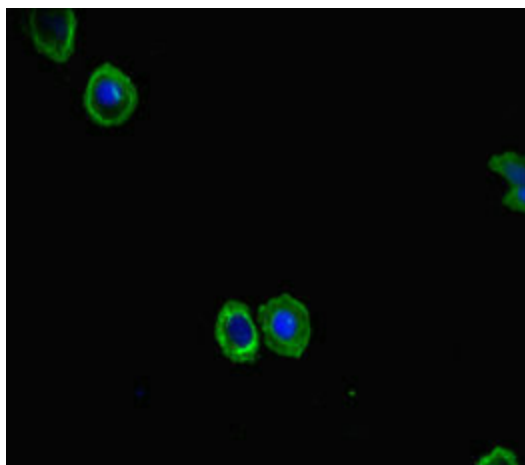
Product data:

Product Type:	Primary Antibodies
Applications:	IF, IHC, WB
Recommended Dilution:	Recommended dilution: WB:1:1000-1:5000, IHC:1:20-1:200, IF:1:50-1:200
Reactivity:	Mouse, Human
Host:	Rabbit
Isotype:	IgG
Clonality:	Polyclonal
Immunogen:	Recombinant Human F-box/LRR-repeat protein 21 protein (78-137AA)
Formulation:	Preservative: 0.03% Proclin 300 Constituents: 50% Glycerol, 0.01M PBS, PH 7.4
Concentration:	lot specific
Purification:	>95%, Protein G purified
Conjugation:	Unconjugated
Storage:	Upon receipt, store at -20°C or -80°C. Avoid repeated freeze.
Stability:	1 year from dispatch.
Database Link:	Q9UKT6
Background:	Substrate-recognition component of the SCF(FBXL21) E3 ubiquitin ligase complex involved in circadian rhythm function. Plays a key role in the maintenance of both the speed and the robustness of the circadian clock oscillation. The SCF(FBXL21) complex mainly acts in the cytosol and mediates ubiquitination of CRY proteins (CRY1 and CRY2), leading to CRY proteins stabilization. The SCF(FBXL21) complex counteracts the activity of the SCF(FBXL3) complex and protects CRY proteins from degradation. Involved in the hypothalamic suprachiasmatic nucleus (SCN) clock regulating temporal organization of the daily activities (By similarity).

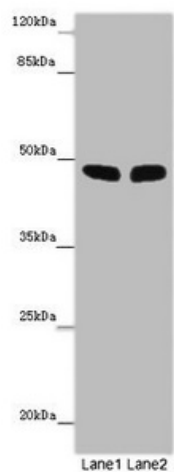

[View online »](#)

Product images:


Immunohistochemistry of paraffin-embedded human lung cancer using [TA387388] at dilution of 1:100



Immunofluorescent analysis of HepG2 cells using [TA387388] at dilution of 1:100 and Alexa Fluor 488-conjugated AffiniPure Goat Anti-Rabbit IgG(H+L)



Western blot

All lanes: FBL21 antibody at 10 µg/ml

Lane 1: Mouse heart tissue

Lane 2: Mouse skeletal muscle tissue

Secondary

Goat polyclonal to rabbit IgG at 1/10000 dilution

Predicted band size: 49 kDa

Observed band size: 49 kDa