

Product datasheet for **TA387383M**

RBPJL Rabbit Polyclonal Antibody

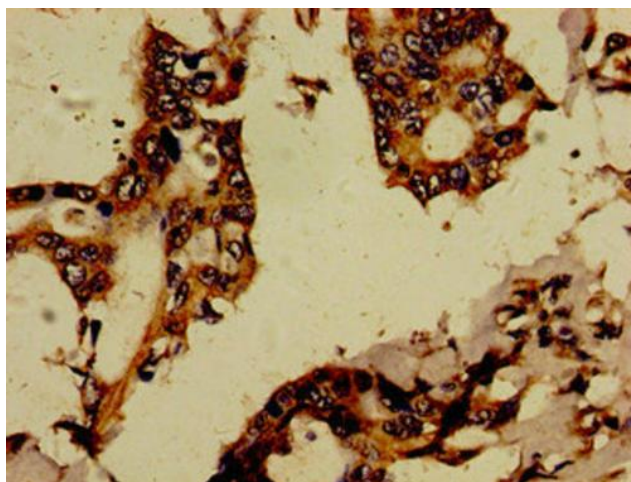
Product data:

| | |
|-----------------------|---|
| Product Type: | Primary Antibodies |
| Applications: | IHC, WB |
| Recommended Dilution: | Recommended dilution: WB:1:500-1:5000, IHC:1:20-1:200 |
| Reactivity: | Human |
| Host: | Rabbit |
| Isotype: | IgG |
| Clonality: | Polyclonal |
| Immunogen: | Recombinant Human Recombining binding protein suppressor of hairless-like protein (1-151AA) |
| Formulation: | Preservative: 0.03% Proclin 300 Constituents: 50% Glycerol, 0.01M PBS, pH 7.4 |
| Concentration: | lot specific |
| Purification: | >95%, Protein G purified |
| Conjugation: | Unconjugated |
| Storage: | Upon receipt, store at -20°C or -80°C. Avoid repeated freeze. |
| Stability: | 1 year from dispatch. |
| Database Link: | Q9UBG7 |
| Background: | Putative transcription factor, which cooperates with EBNA2 to activate transcription. |

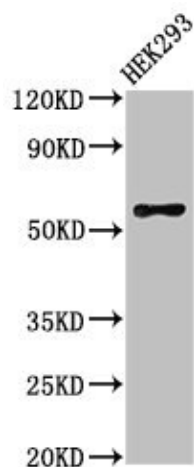


[View online »](#)

Product images:



Immunohistochemistry of paraffin-embedded human pancreatic cancer using [TA387383] at dilution of 1:100



Western Blot
Positive WB detected in: HEK293 whole cell lysate
All lanes: RBPJL antibody at 3µg/ml
Secondary
Goat polyclonal to rabbit IgG at 1/50000 dilution
Predicted band size: 57 kDa
Observed band size: 57 kDa