

Product datasheet for **TA387380M**

FKBP14 Rabbit Polyclonal Antibody

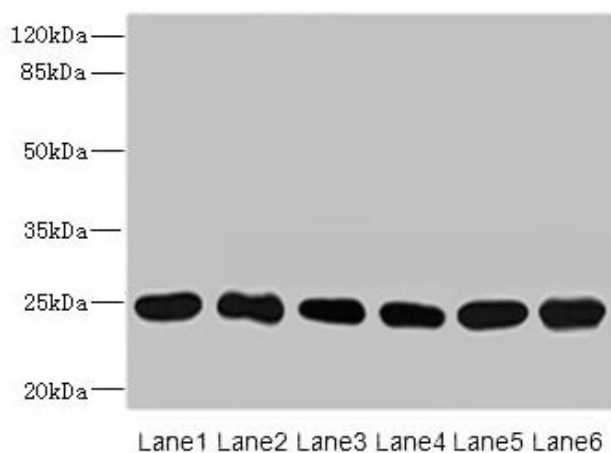
Product data:

Product Type:	Primary Antibodies
Applications:	WB
Recommended Dilution:	Recommended dilution: WB:1:1000-1:5000
Reactivity:	Mouse, Human
Host:	Rabbit
Isotype:	IgG
Clonality:	Polyclonal
Immunogen:	Recombinant Human Peptidyl-prolyl cis-trans isomerase FKBP14 protein (20-211AA)
Formulation:	Preservative: 0.03% Proclin 300 Constituents: 50% Glycerol, 0.01M PBS, PH 7.4
Concentration:	lot specific
Purification:	>95%, Protein G purified
Conjugation:	Unconjugated
Storage:	Upon receipt, store at -20°C or -80°C. Avoid repeated freeze.
Stability:	1 year from dispatch.
Database Link:	Q9NWM8
Background:	PPIases accelerate the folding of proteins during protein synthesis.



[View online »](#)

Product images:



Western blot

All lanes: FKBP14 antibody at 1 μ g/ml

Lane 1: Mouse stomach tissue

Lane 2: Mouse gonadal tissue

Lane 3: U937 whole cell lysate

Lane 4: PC-3 whole cell lysate

Lane 5: 293T whole cell lysate

Lane 6: THP-1 whole cell lysate

Secondary

Goat polyclonal to rabbit IgG at 1/10000 dilution

Predicted band size: 25 kDa

Observed band size: 25 kDa