

Product datasheet for **TA387378M**

NLE1 Rabbit Polyclonal Antibody

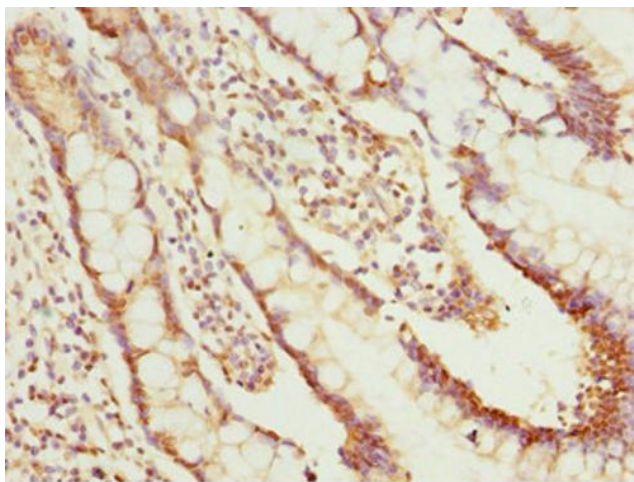
Product data:

Product Type:	Primary Antibodies
Applications:	IHC, WB
Recommended Dilution:	Recommended dilution: WB:1:1000-1:5000, IHC:1:20-1:200
Reactivity:	Human
Host:	Rabbit
Isotype:	IgG
Clonality:	Polyclonal
Immunogen:	Recombinant Human Notchless protein homolog 1 protein (206-485AA)
Formulation:	PBS with 0.02% sodium azide, 50% glycerol, pH7.3.
Concentration:	lot specific
Purification:	Antigen Affinity Purified
Conjugation:	Unconjugated
Storage:	Upon receipt, store at -20°C or -80°C. Avoid repeated freeze.
Stability:	1 year from dispatch.
Database Link:	<u>Q9NVX2</u>
Background:	Plays a role in regulating Notch activity. Plays a role in regulating the expression of CDKN1A and several members of the Wnt pathway, probably via its effects on Notch activity. Required during embryogenesis for inner mass cell survival (By similarity).

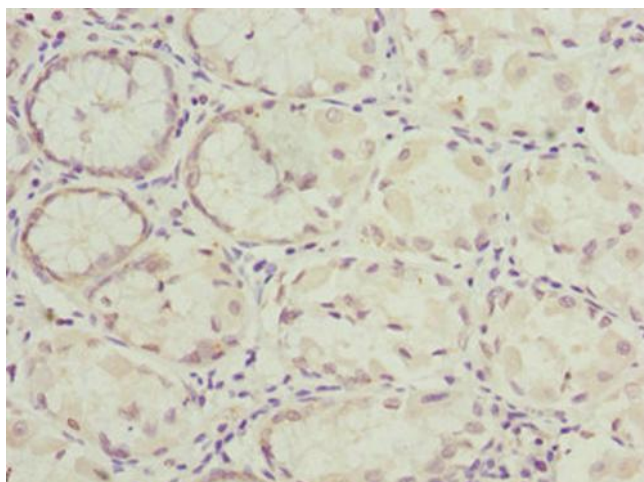


[View online »](#)

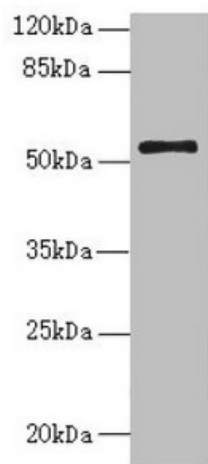
Product images:



Immunohistochemistry of paraffin-embedded human small intestine tissue using [TA387378] at dilution of 1:100



Immunohistochemistry of paraffin-embedded human gastric cancer using [TA387378] at dilution of 1:100



Western blot

All lanes: NLE1 antibody at 1.48µg/ml + PC-3 whole cell lysate

Secondary

Goat polyclonal to rabbit IgG at 1/10000 dilution

Predicted band size: 54, 22 kDa

Observed band size: 54 kDa