

## Product datasheet for **TA387375M**

### **PNPLA3 Rabbit Polyclonal Antibody**

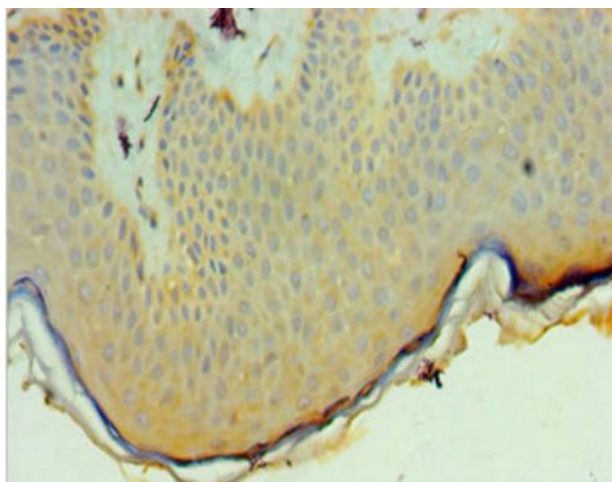
#### **Product data:**

Product Type:	Primary Antibodies
Applications:	IHC, WB
Recommended Dilution:	Recommended dilution: WB:1:200-1:1000, IHC:1:20-1:200
Reactivity:	Human
Host:	Rabbit
Isotype:	IgG
Clonality:	Polyclonal
Immunogen:	Recombinant Human Patatin-like phospholipase domain-containing protein 3 protein (377-481AA)
Formulation:	PBS with 0.02% sodium azide, 50% glycerol, pH7.3.
Concentration:	lot specific
Purification:	Antigen Affinity Purified
Conjugation:	Unconjugated
Storage:	Upon receipt, store at -20°C or -80°C. Avoid repeated freeze.
Stability:	1 year from dispatch.
Database Link:	<a href="#">Q9NST1</a>
Background:	Multifunctional enzyme which has both triacylglycerol lipase and acylglycerol O-acyltransferase activities.

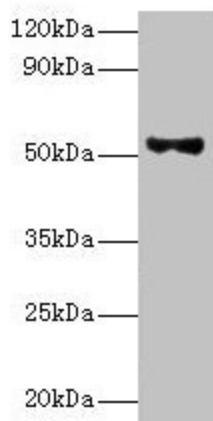


[View online »](#)

## Product images:



Immunohistochemistry of paraffin-embedded human skin tissue using [TA387375] at dilution of 1:100



Western blot  
All lanes: Patatin-like phospholipase domain-containing protein 3 antibody at 8µg/ml + HepG2 whole cell lysate  
Secondary  
Goat polyclonal to rabbit IgG at 1/10000 dilution  
Predicted band size: 53 kDa  
Observed band size: 53 kDa