

## Product datasheet for **TA387373**

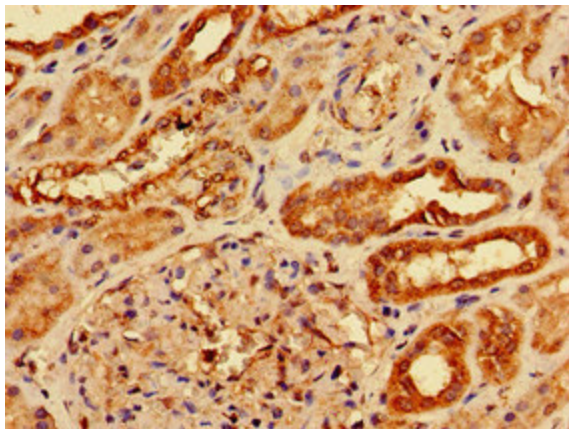
### AGPAT3 Rabbit Polyclonal Antibody

#### Product data:

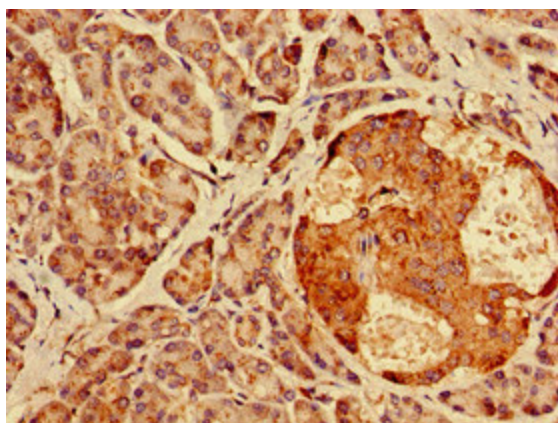
Product Type:	Primary Antibodies
Applications:	IHC, WB
Recommended Dilution:	Recommended dilution: WB:1:500-1:5000, IHC:1:20-1:200
Reactivity:	Human
Host:	Rabbit
Isotype:	IgG
Clonality:	Polyclonal
Immunogen:	Recombinant Human 1-acyl-sn-glycerol-3-phosphate acyltransferase gamma protein (148-304AA)
Formulation:	Preservative: 0.03% Proclin 300 Constituents: 50% Glycerol, 0.01M PBS, pH 7.4
Concentration:	lot specific
Purification:	>95%, Protein G purified
Conjugation:	Unconjugated
Storage:	Upon receipt, store at -20°C or -80°C. Avoid repeated freeze.
Stability:	1 year from dispatch.
Database Link:	<a href="#">Q9NRZ7</a>
Background:	Converts lysophosphatidic acid (LPA) into phosphatidic acid by incorporating an acyl moiety at the sn-2 position of the glycerol backbone. Acts on LPA containing saturated or unsaturated fatty acids C16:0-C20:4 at the sn-1 position using C18:1, C20:4 or C18:2-CoA as the acyl donor. Also acts on lysophosphatidylcholine, lysophosphatidylinositol and lysophosphatidylserine using C18:1 or C20:4-CoA (PubMed:21173190). Has a preference for arachidonoyl-CoA as a donor. Has also a modest lysophosphatidylinositol acyltransferase (LPIAT) activity, converts lysophosphatidylinositol (LPI) into phosphatidylinositol (By similarity).



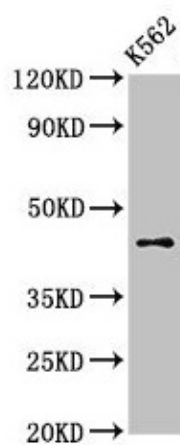
[View online »](#)

**Product images:**

Immunohistochemistry of paraffin-embedded human kidney tissue using TA387373 at dilution of 1:100



Immunohistochemistry of paraffin-embedded human pancreatic tissue using TA387373 at dilution of 1:100



Western Blot

Positive WB detected in: K562 whole cell lysate

All lanes: AGPAT3 antibody at 3 $\mu$ g/ml

Secondary

Goat polyclonal to rabbit IgG at 1/50000 dilution

Predicted band size: 44, 37, 46 kDa

Observed band size: 44 kDa