

## Product datasheet for **TA387372M**

### SLC2A9 Rabbit Polyclonal Antibody

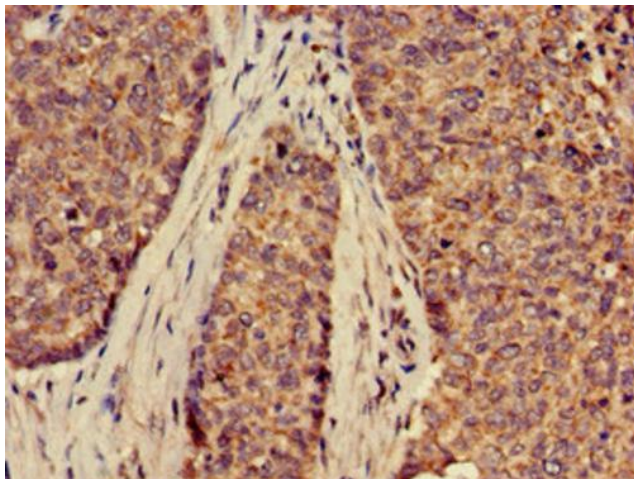
#### Product data:

Product Type:	Primary Antibodies
Applications:	IHC, WB
Recommended Dilution:	Recommended dilution: WB:1:500-1:5000, IHC:1:20-1:200
Reactivity:	Mouse, Human
Host:	Rabbit
Isotype:	IgG
Clonality:	Polyclonal
Immunogen:	Recombinant Human Solute carrier family 2, facilitated glucose transporter member 9 protein (473-511AA)
Formulation:	Preservative: 0.03% Proclin 300 Constituents: 50% Glycerol, 0.01M PBS, pH 7.4
Concentration:	lot specific
Purification:	>95%, Protein G purified
Conjugation:	Unconjugated
Storage:	Upon receipt, store at -20°C or -80°C. Avoid repeated freeze.
Stability:	1 year from dispatch.
Database Link:	<a href="#">Q9NRM0</a>
Background:	Transport urate and fructose. May have a role in the urate reabsorption by proximal tubules. Also transports glucose at low rate.

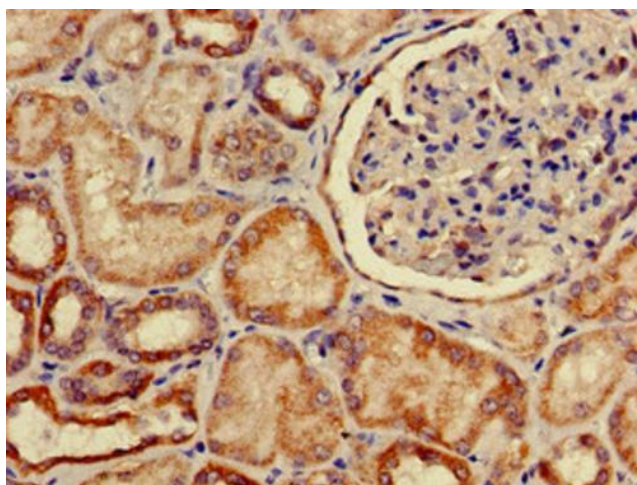


[View online »](#)

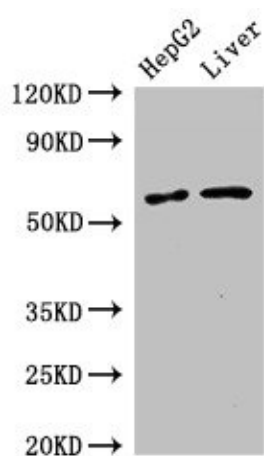
**Product images:**



Immunohistochemistry of paraffin-embedded human ovarian cancer using [TA387372] at dilution of 1:100



Immunohistochemistry of paraffin-embedded human kidney tissue using [TA387372] at dilution of 1:100



Western Blot

Positive WB detected in: HepG2 whole cell lysate,  
Mouse liver tissue

All lanes: SLC2A9 antibody at 2.7µg/ml

Secondary

Goat polyclonal to rabbit IgG at 1/50000 dilution

Predicted band size: 59, 56 kDa

Observed band size: 59 kDa