

Product datasheet for **TA387371**

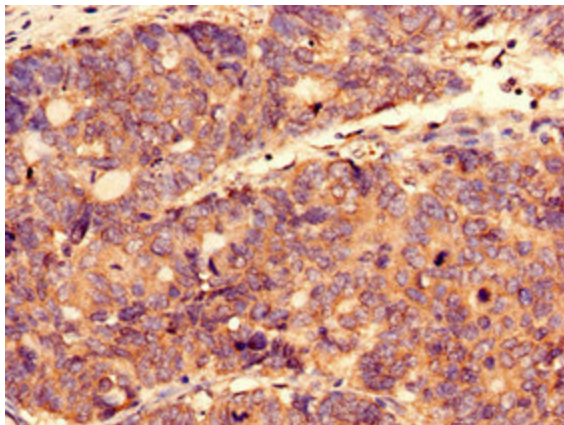
CTPS2 Rabbit Polyclonal Antibody

Product data:

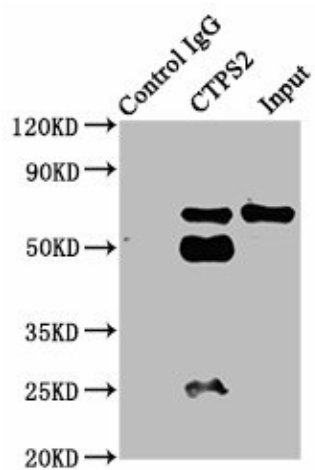
Product Type:	Primary Antibodies
Applications:	IHC, IP, WB
Recommended Dilution:	Recommended dilution: WB:1:500-1:5000, IHC:1:20-1:200, IP:1:200-1:2000
Reactivity:	Human
Host:	Rabbit
Isotype:	IgG
Clonality:	Polyclonal
Immunogen:	Recombinant Human CTP synthase 2 protein (62-315AA)
Formulation:	Preservative: 0.03% Proclin 300 Constituents: 50% Glycerol, 0.01M PBS, PH 7.4
Concentration:	lot specific
Purification:	>95%, Protein G purified
Conjugation:	Unconjugated
Storage:	Upon receipt, store at -20°C or -80°C. Avoid repeated freeze.
Stability:	1 year from dispatch.
Database Link:	Q9NRF8
Background:	Catalyzes the ATP-dependent amination of UTP to CTP with either L-glutamine or ammonia as the source of nitrogen. Constitutes the rate-limiting enzyme in the synthesis of cytosine nucleotides.



[View online »](#)

Product images:

Immunocytochemistry analysis of human gastric cancer using TA387371 at dilution of 1:100

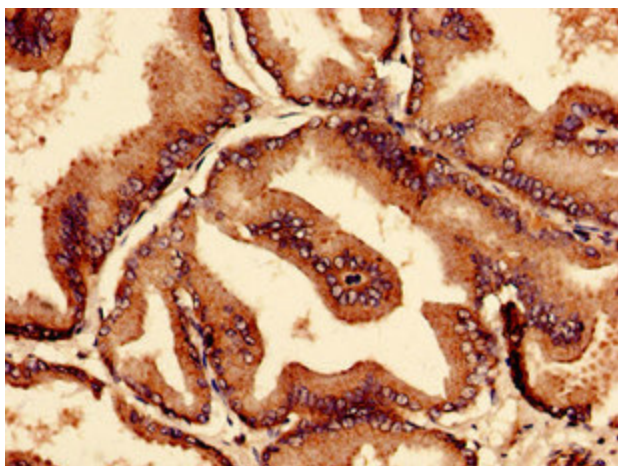


Immunoprecipitating CTPS2 in HepG2 whole cell lysate

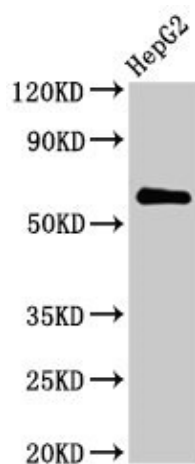
Lane 1: Rabbit control IgG instead of TA387371 in HepG2 whole cell lysate. For western blotting, a HRP-conjugated Protein G antibody was used as the secondary antibody (1/2000)

Lane 2: TA387371 (6 μ g) + HepG2 whole cell lysate (500 μ g)

Lane 3: HepG2 whole cell lysate (20 μ g)



Immunocytochemistry analysis of human prostate tissue using TA387371 at dilution of 1:100



Western Blot
Positive WB detected in: HepG2 whole cell lysate
All lanes: CTPS2 antibody at 2.8 μ g/ml
Secondary
Goat polyclonal to rabbit IgG at 1/50000 dilution
Predicted band size: 66 kDa
Observed band size: 66 kDa