

## Product datasheet for **TA387370M**

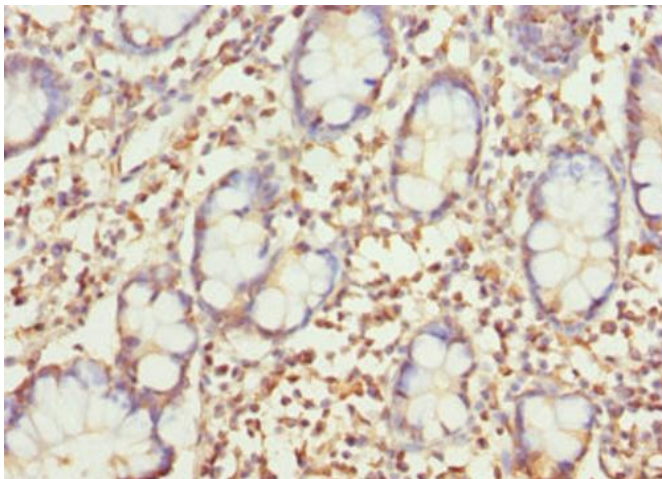
### **SAR1A Rabbit Polyclonal Antibody**

#### **Product data:**

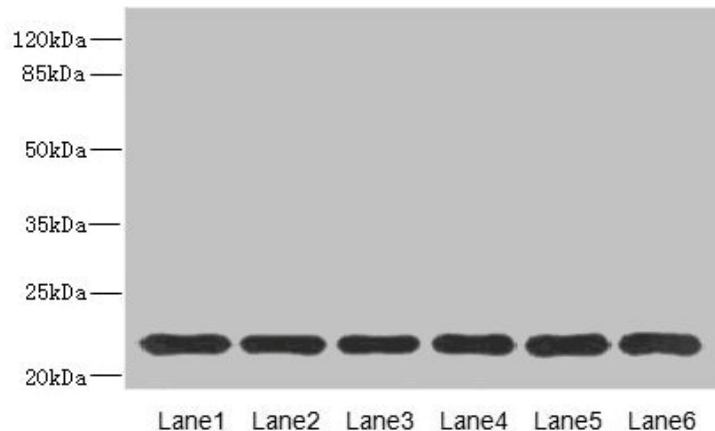
Product Type:	Primary Antibodies
Applications:	IHC, WB
Recommended Dilution:	Recommended dilution: WB:1:1000-1:5000, IHC:1:20-1:200
Reactivity:	Mouse, Human
Host:	Rabbit
Isotype:	IgG
Clonality:	Polyclonal
Immunogen:	Recombinant Human GTP-binding protein SAR1a protein (1-198AA)
Formulation:	PBS with 0.02% sodium azide, 50% glycerol, pH7.3.
Concentration:	lot specific
Purification:	Antigen Affinity Purified
Conjugation:	Unconjugated
Storage:	Upon receipt, store at -20°C or -80°C. Avoid repeated freeze.
Stability:	1 year from dispatch.
Database Link:	<a href="#">Q9NR31</a>
Background:	Involved in transport from the endoplasmic reticulum to the Golgi apparatus (By similarity). Required to maintain SEC16A localization at discrete locations on the ER membrane perhaps by preventing its dissociation. SAR1A-GTP-dependent assembly of SEC16A on the ER membrane forms an organized scaffold defining endoplasmic reticulum exit sites (ERES).

[View online »](#)

## Product images:



Immunohistochemistry of paraffin-embedded human small intestine tissue using [TA387370] at dilution of 1:100



### Western blot

All lanes: SAR1A antibody at 4.57μg/ml

Lane 1: Mouse lung tissue

Lane 2: NIH/3T3 whole cell lysate

Lane 3: A431 whole cell lysate

Lane 4: MCF-7 whole cell lysate

Lane 5: Jurkat whole cell lysate

Lane 6: HepG2 whole cell lysate

Secondary

Goat polyclonal to rabbit IgG at 1/10000 dilution

Predicted band size: 23, 18 kDa

Observed band size: 23 kDa