

Product datasheet for **TA387370**

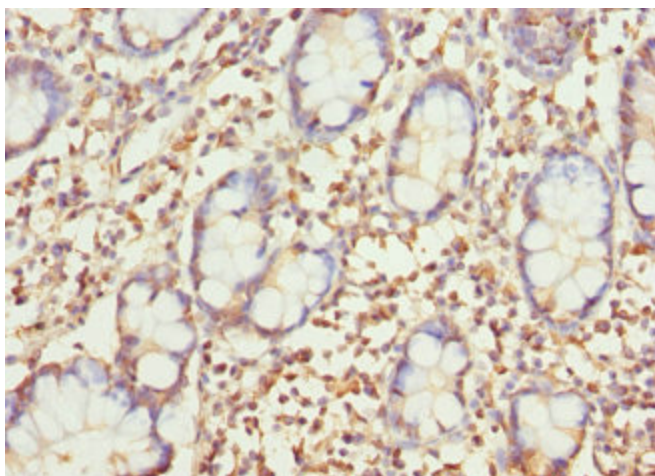
SAR1A Rabbit Polyclonal Antibody

Product data:

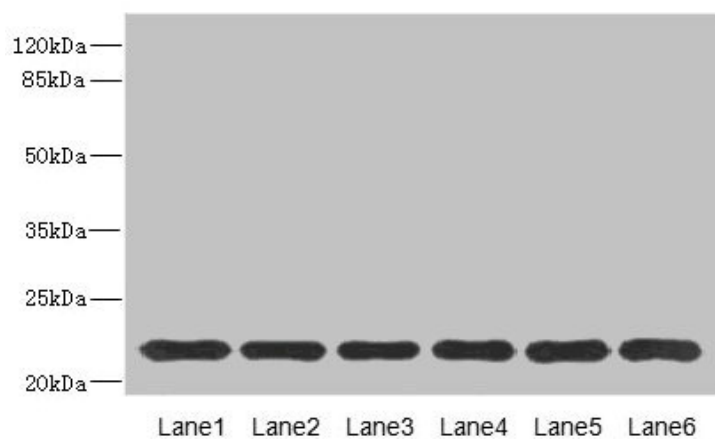
Product Type:	Primary Antibodies
Applications:	IHC, WB
Recommended Dilution:	Recommended dilution: WB:1:1000-1:5000, IHC:1:20-1:200
Reactivity:	Mouse, Human
Host:	Rabbit
Isotype:	IgG
Clonality:	Polyclonal
Immunogen:	Recombinant Human GTP-binding protein SAR1a protein (1-198AA)
Formulation:	PBS with 0.02% sodium azide, 50% glycerol, pH7.3.
Concentration:	lot specific
Purification:	Antigen Affinity Purified
Conjugation:	Unconjugated
Storage:	Upon receipt, store at -20°C or -80°C. Avoid repeated freeze.
Stability:	1 year from dispatch.
Database Link:	Q9NR31
Background:	Involved in transport from the endoplasmic reticulum to the Golgi apparatus (By similarity). Required to maintain SEC16A localization at discrete locations on the ER membrane perhaps by preventing its dissociation. SAR1A-GTP-dependent assembly of SEC16A on the ER membrane forms an organized scaffold defining endoplasmic reticulum exit sites (ERES).



[View online »](#)

Product images:

Immunohistochemistry of paraffin-embedded human small intestine tissue using TA387370 at dilution of 1:100



Western blot
All lanes: SAR1A antibody at 4.57 μ g/ml
Lane 1: Mouse lung tissue
Lane 2: NIH/3T3 whole cell lysate
Lane 3: A431 whole cell lysate
Lane 4: MCF-7 whole cell lysate
Lane 5: Jurkat whole cell lysate
Lane 6: HepG2 whole cell lysate
Secondary
Goat polyclonal to rabbit IgG at 1/10000 dilution
Predicted band size: 23, 18 kDa
Observed band size: 23 kDa