

## Product datasheet for **TA387366M**

### SCPEP1 Rabbit Polyclonal Antibody

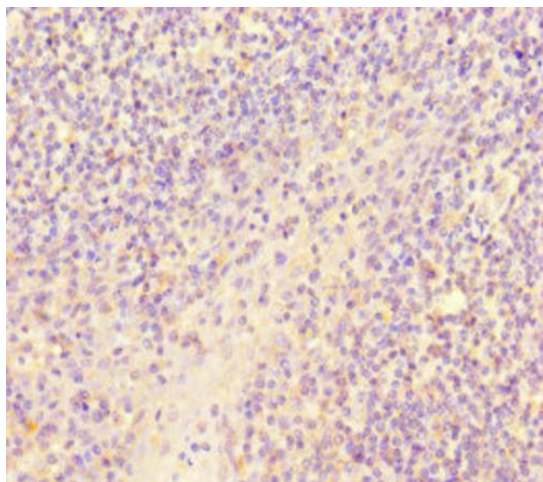
#### Product data:

Product Type:	Primary Antibodies
Applications:	IHC, WB
Recommended Dilution:	Recommended dilution: WB:1:1000-1:5000, IHC:1:20-1:200
Reactivity:	Mouse, Human
Host:	Rabbit
Isotype:	IgG
Clonality:	Polyclonal
Immunogen:	Recombinant Human Retinoid-inducible serine carboxypeptidase protein (201-452AA)
Formulation:	Preservative: 0.03% Proclin 300 Constituents: 50% Glycerol, 0.01M PBS, PH 7.4
Concentration:	lot specific
Purification:	>95%, Protein G purified
Conjugation:	Unconjugated
Storage:	Upon receipt, store at -20°C or -80°C. Avoid repeated freeze.
Stability:	1 year from dispatch.
Database Link:	<a href="#">Q9HB40</a>
Background:	May be involved in vascular wall and kidney homeostasis.

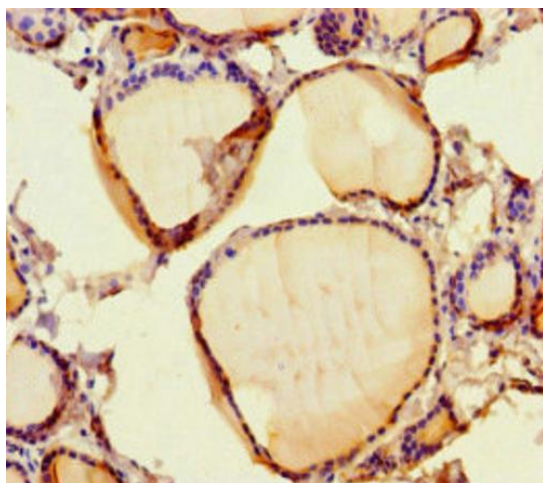


[View online »](#)

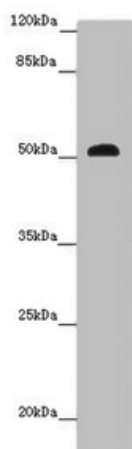
## Product images:



Immunohistochemistry of paraffin-embedded human tonsil tissue using [TA387366] at dilution of 1:100



Immunohistochemistry of paraffin-embedded human thyroid tissue using [TA387366] at dilution of 1:100



Western blot  
 All lanes: SCPEP1 antibody at 9 µg/ml + Mouse stomach tissue  
 Secondary  
 Goat polyclonal to rabbit IgG at 1/10000 dilution  
 Predicted band size: 51, 33 kDa  
 Observed band size: 51 kDa