

## Product datasheet for **TA387365M**

### L2HGDH Rabbit Polyclonal Antibody

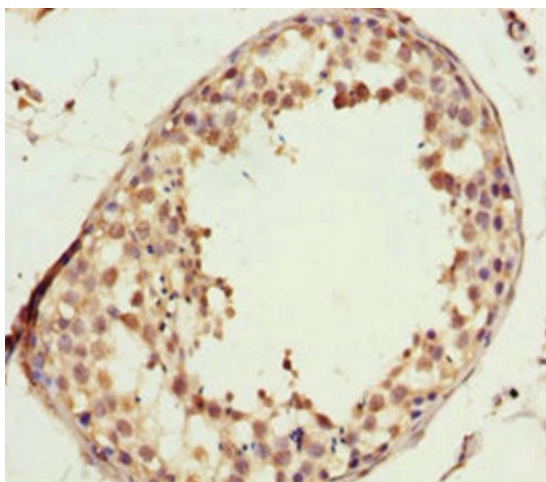
#### Product data:

Product Type:	Primary Antibodies
Applications:	IHC, WB
Recommended Dilution:	Recommended dilution: WB:1:1000-1:5000, IHC:1:20-1:200
Reactivity:	Mouse, Human
Host:	Rabbit
Isotype:	IgG
Clonality:	Polyclonal
Immunogen:	Recombinant Human L-2-hydroxyglutarate dehydrogenase, mitochondrial protein (1-220AA)
Formulation:	PBS with 0.02% sodium azide, 50% glycerol, pH7.3.
Concentration:	lot specific
Purification:	Antigen Affinity Purified
Conjugation:	Unconjugated
Storage:	Upon receipt, store at -20°C or -80°C. Avoid repeated freeze.
Stability:	1 year from dispatch.
Database Link:	<a href="#">Q9H9P8</a>
Background:	integral component of membrane, integral component of mitochondrial inner membrane, mitochondrial inner membrane, mitochondrion, 2-hydroxyglutarate dehydrogenase activity, 2-oxoglutarate metabolic process, cellular protein metabolic process

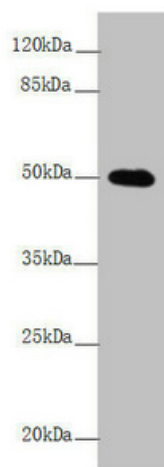


[View online »](#)

## Product images:



Immunohistochemistry of paraffin-embedded human testis tissue using [TA387365] at dilution of 1:100



Western blot  
All lanes: L2HGDH antibody at 4.43 µg/ml +  
Mouse heart tissue  
Secondary  
Goat polyclonal to rabbit IgG at 1/10000 dilution  
Predicted band size: 51, 49 kDa  
Observed band size: 51 kDa