

Product datasheet for **TA387364M**

L2HGDH Rabbit Polyclonal Antibody

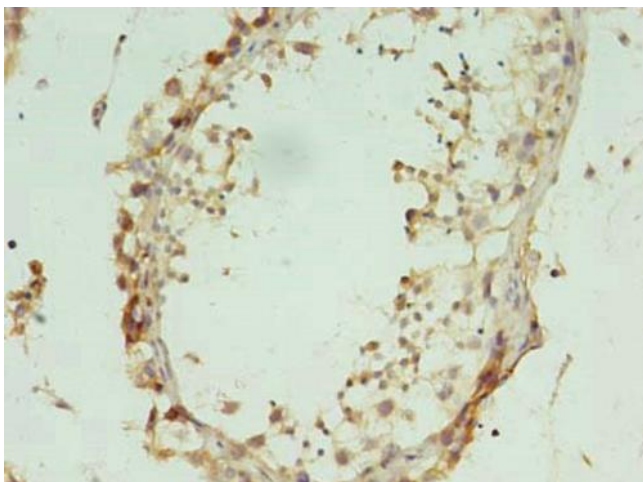
Product data:

Product Type:	Primary Antibodies
Applications:	IHC, WB
Recommended Dilution:	Recommended dilution: WB:1:500-1:2000, IHC:1:20-1:200
Reactivity:	Human
Host:	Rabbit
Isotype:	IgG
Clonality:	Polyclonal
Immunogen:	Recombinant Human L-2-hydroxyglutarate dehydrogenase, mitochondrial protein (52-463AA)
Formulation:	Preservative: 0.03% Proclin 300 Constituents: 50% Glycerol, 0.01M PBS, PH 7.4
Concentration:	lot specific
Purification:	>95%, Protein G purified
Conjugation:	Unconjugated
Storage:	Upon receipt, store at -20°C or -80°C. Avoid repeated freeze.
Stability:	1 year from dispatch.
Database Link:	Q9H9P8
Background:	integral component of membrane, integral component of mitochondrial inner membrane, mitochondrial inner membrane, mitochondrion, 2-hydroxyglutarate dehydrogenase activity, 2-oxoglutarate metabolic process, cellular metabolic process, cellular protein metabolic process, small molecule metabolic process

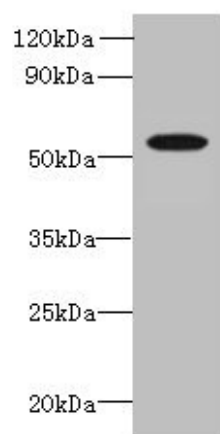


[View online »](#)

Product images:



Immunohistochemistry of paraffin-embedded human testis tissue using [TA387364] at dilution of 1:100



Western blot
All lanes: L2HGDH antibody at 8 μ g/ml + K562 whole cell lysate
Secondary
Goat polyclonal to rabbit IgG at 1/10000 dilution
Predicted band size: 51, 49 kDa
Observed band size: 51 kDa