

## Product datasheet for **TA387362**

### DSN1 Rabbit Polyclonal Antibody

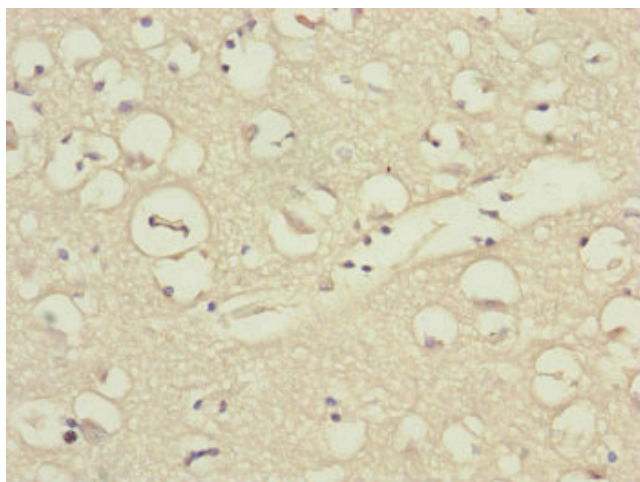
#### Product data:

Product Type:	Primary Antibodies
Applications:	IHC, WB
Recommended Dilution:	Recommended dilution: WB:1:1000-1:5000, IHC:1:20-1:200
Reactivity:	Mouse, Human
Host:	Rabbit
Isotype:	IgG
Clonality:	Polyclonal
Immunogen:	Recombinant Human Kinetochores-associated protein DSN1 homolog protein (1-356AA)
Formulation:	PBS with 0.02% sodium azide, 50% glycerol, pH7.3.
Concentration:	lot specific
Purification:	Antigen Affinity Purified
Conjugation:	Unconjugated
Storage:	Upon receipt, store at -20°C or -80°C. Avoid repeated freeze.
Stability:	1 year from dispatch.
Database Link:	<a href="#">Q9H410</a>
Background:	Part of the MIS12 complex which is required for normal chromosome alignment and segregation and kinetochores formation during mitosis.

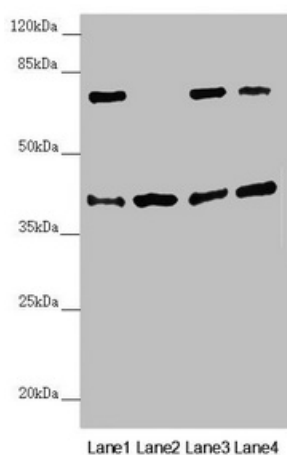


[View online »](#)

Product images:



Immunohistochemistry of paraffin-embedded human brain tissue using TA387362 at dilution of 1:100



Western blot  
 All lanes: DSN1 antibody at 2.19  $\mu\text{g/ml}$   
 Lane 1: Hela whole cell lysate  
 Lane 2: Mouse skeletal muscle tissue  
 Lane 3: Mouse lung tissue  
 Lane 4: Mouse stomach tissue  
 Secondary  
 Goat polyclonal to rabbit IgG at 1/10000 dilution  
 Predicted band size: 41, 33, 39, 28 kDa  
 Observed band size: 41, 70 kDa