

Product datasheet for **TA387361M**

SH3BGRL3 Rabbit Polyclonal Antibody

Product data:

Product Type:	Primary Antibodies
Applications:	IHC, WB
Recommended Dilution:	Recommended dilution: WB:1:1000-1:5000, IHC:1:20-1:200
Reactivity:	Human
Host:	Rabbit
Isotype:	IgG
Clonality:	Polyclonal
Immunogen:	Recombinant Human SH3 domain-binding glutamic acid-rich-like protein 3 protein (2-93AA)
Formulation:	Preservative: 0.03% Proclin 300 Constituents: 50% Glycerol, 0.01M PBS, PH 7.4
Concentration:	lot specific
Purification:	>95%, Protein G purified
Conjugation:	Unconjugated
Storage:	Upon receipt, store at -20°C or -80°C. Avoid repeated freeze.
Stability:	1 year from dispatch.
Database Link:	Q9H299
Background:	Could act as a modulator of glutaredoxin biological activity.

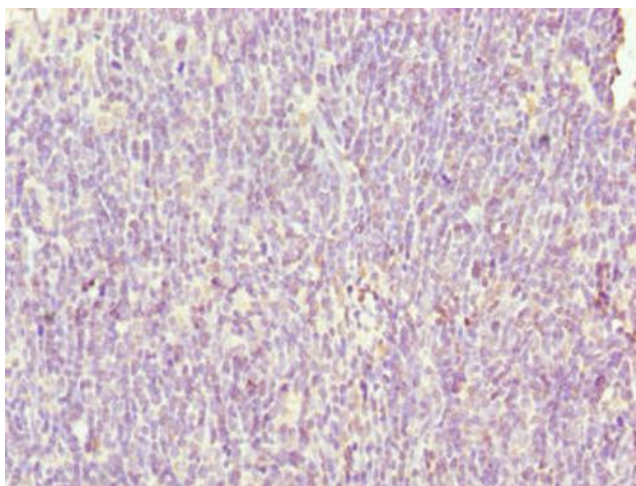


[View online »](#)

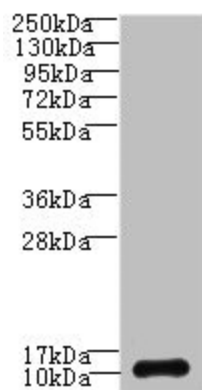
Product images:



Immunohistochemistry of paraffin-embedded human skeletal muscle tissue using [TA387361] at dilution of 1:100



Immunohistochemistry of paraffin-embedded human thymus tissue using [TA387361] at dilution of 1:100



Western blot

All lanes: SH3BGRL3 antibody at 0.05µg/ml + U87 whole cell lysate

Secondary

Goat polyclonal to rabbit IgG at 1/10000 dilution

Predicted band size: 11 kDa

Observed band size: 11 kDa