

Product datasheet for **TA387357M**

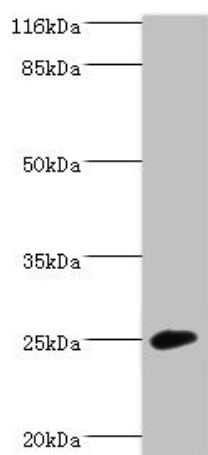
CALN1 Rabbit Polyclonal Antibody

Product data:

Product Type:	Primary Antibodies
Applications:	WB
Recommended Dilution:	Recommended dilution: WB:1:500-1:2000
Reactivity:	Mouse, Human
Host:	Rabbit
Isotype:	IgG
Clonality:	Polyclonal
Immunogen:	Recombinant Human Calcium-binding protein 8 protein (1-192AA)
Formulation:	Preservative: 0.03% Proclin 300 Constituents: 50% Glycerol, 0.01M PBS, PH 7.4
Concentration:	lot specific
Purification:	>95%, Protein G purified
Conjugation:	Unconjugated
Storage:	Upon receipt, store at -20°C or -80°C. Avoid repeated freeze.
Stability:	1 year from dispatch.
Database Link:	Q9BXU9
Background:	Negatively regulates Golgi-to-plasma membrane trafficking by interacting with PI4KB and inhibiting its activity (By similarity). May play a role in the physiology of neurons and is potentially important in memory and learning.



[View online »](#)

Product images:


Western blot
 All lanes: CALN1 antibody at 2 μ g/ml + Mouse
 brain tissue
 Secondary
 Goat polyclonal to rabbit IgG at 1/10000 dilution
 Predicted band size: 25, 30 kDa
 Observed band size: 25 kDa