

## Product datasheet for **TA387355**

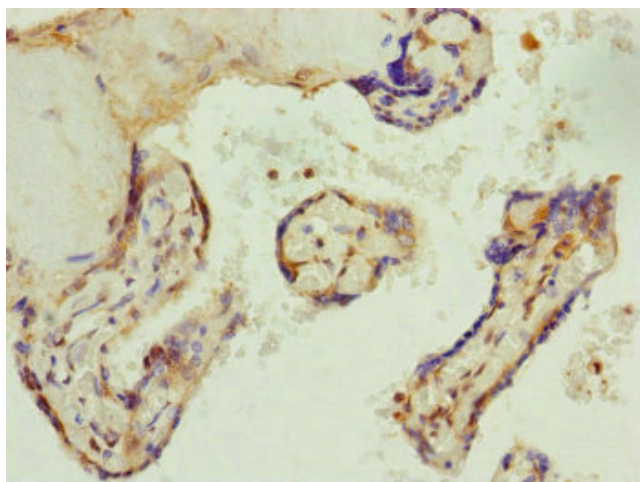
### AP1M1 Rabbit Polyclonal Antibody

#### Product data:

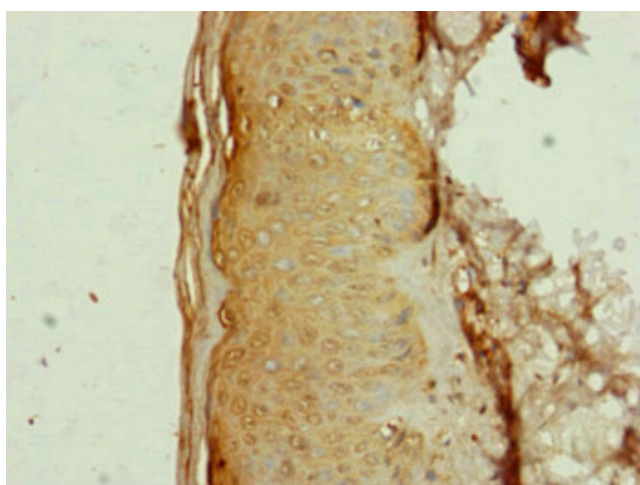
Product Type:	Primary Antibodies
Applications:	IHC, WB
Recommended Dilution:	Recommended dilution: WB:1:1000-1:5000, IHC:1:20-1:200
Reactivity:	Human
Host:	Rabbit
Isotype:	IgG
Clonality:	Polyclonal
Immunogen:	Recombinant Human AP-1 complex subunit mu-1 protein (1-160AA)
Formulation:	PBS with 0.02% sodium azide, 50% glycerol, pH7.3.
Concentration:	lot specific
Purification:	Antigen Affinity Purified
Conjugation:	Unconjugated
Storage:	Upon receipt, store at -20°C or -80°C. Avoid repeated freeze.
Stability:	1 year from dispatch.
Database Link:	<a href="#">Q9BXS5</a>
Background:	Subunit of clathrin-associated adaptor protein complex 1 that plays a role in protein sorting in the trans-Golgi network (TGN) and endosomes. The AP complexes mediate the recruitment of clathrin to membranes and the recognition of sorting signals within the cytosolic tails of transmembrane cargo molecules.



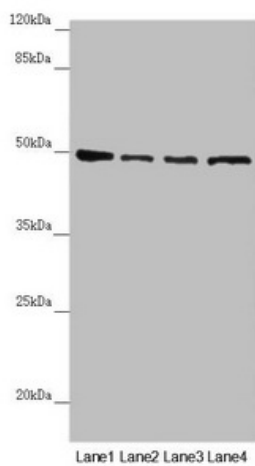
[View online »](#)

**Product images:**

Immunohistochemistry of paraffin-embedded human placenta tissue using TA387355 at dilution of 1:100



Immunohistochemistry of paraffin-embedded human skin tissue using TA387355 at dilution of 1:100



#### Western blot

All lanes: AP1M1 antibody at 1.43 $\mu$ g/ml

Lane 1: A375 whole cell lysate

Lane 2: Jurkat whole cell lysate

Lane 3: Hela whole cell lysate

Lane 4: HepG2 whole cell lysate

Secondary

Goat polyclonal to rabbit IgG at 1/10000 dilution

Predicted band size: 49, 50 kDa

Observed band size: 49 kDa