

Product datasheet for **TA387353M**

TUBB6 Rabbit Polyclonal Antibody

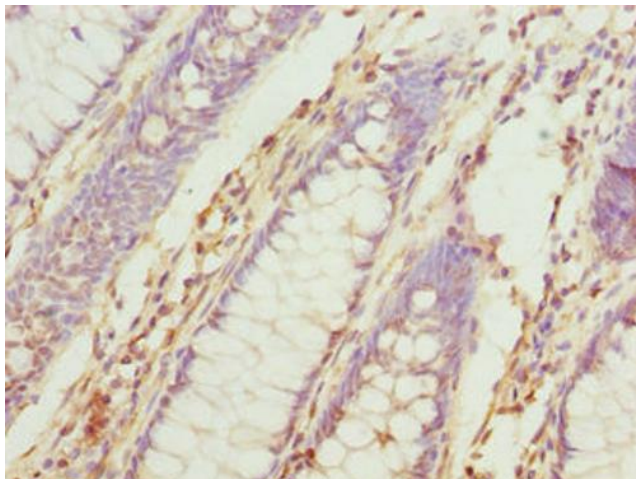
Product data:

| | |
|-----------------------|---------------------------------------------------------------------------------------------------------------------------------------------------------------------------------------------------|
| Product Type: | Primary Antibodies |
| Applications: | IHC, WB |
| Recommended Dilution: | Recommended dilution: WB:1:500-1:2000, IHC:1:20-1:200 |
| Reactivity: | Human |
| Host: | Rabbit |
| Isotype: | IgG |
| Clonality: | Polyclonal |
| Immunogen: | Recombinant Human Tubulin beta-6 chain protein (1-446AA) |
| Formulation: | Preservative: 0.03% Proclin 300 Constituents: 50% Glycerol, 0.01M PBS, PH 7.4 |
| Concentration: | lot specific |
| Purification: | >95%, Protein G purified |
| Conjugation: | Unconjugated |
| Storage: | Upon receipt, store at -20°C or -80°C. Avoid repeated freeze. |
| Stability: | 1 year from dispatch. |
| Database Link: | Q9BUF5 |
| Background: | Tubulin is the major constituent of microtubules. It binds two moles of GTP, one at an exchangeable site on the beta chain and one at a non-exchangeable site on the alpha chain (By similarity). |

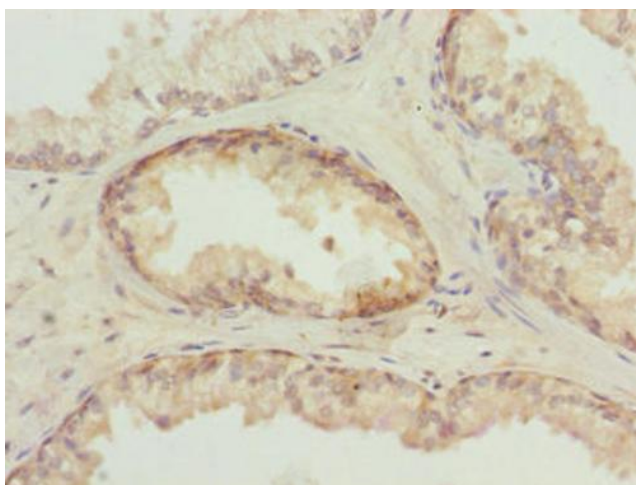


[View online »](#)

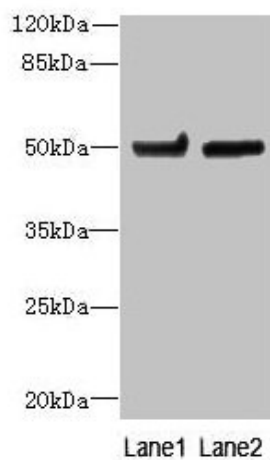
Product images:



Immunohistochemistry of paraffin-embedded human colon cancer using [TA387353] at dilution of 1:100



Immunohistochemistry of paraffin-embedded human prostate cancer using [TA387353] at dilution of 1:100



Western blot

All lanes: TUBB6 antibody at 4 μ g/ml

Lane 1: Hela whole cell lysate

Lane 2: MDA-MB-231 whole cell lysate

Secondary

Goat polyclonal to rabbit IgG at 1/10000 dilution

Predicted band size: 50 kDa

Observed band size: 50 kDa