

Product datasheet for **TA387353**

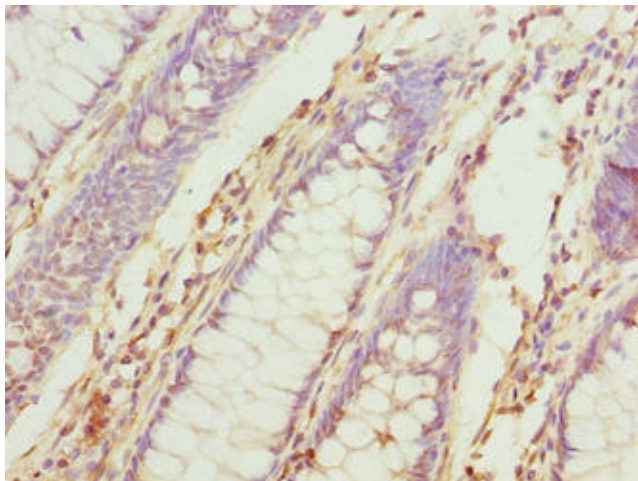
TUBB6 Rabbit Polyclonal Antibody

Product data:

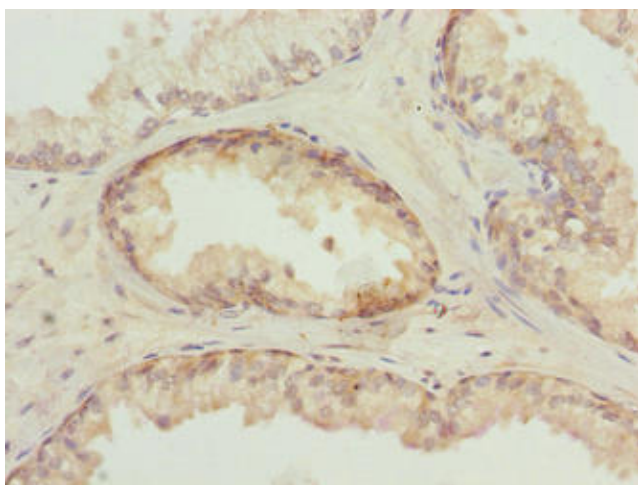
Product Type:	Primary Antibodies
Applications:	IHC, WB
Recommended Dilution:	Recommended dilution: WB:1:500-1:2000, IHC:1:20-1:200
Reactivity:	Human
Host:	Rabbit
Isotype:	IgG
Clonality:	Polyclonal
Immunogen:	Recombinant Human Tubulin beta-6 chain protein (1-446AA)
Formulation:	Preservative: 0.03% Proclin 300 Constituents: 50% Glycerol, 0.01M PBS, PH 7.4
Concentration:	lot specific
Purification:	>95%, Protein G purified
Conjugation:	Unconjugated
Storage:	Upon receipt, store at -20°C or -80°C. Avoid repeated freeze.
Stability:	1 year from dispatch.
Database Link:	Q9BUF5
Background:	Tubulin is the major constituent of microtubules. It binds two moles of GTP, one at an exchangeable site on the beta chain and one at a non-exchangeable site on the alpha chain (By similarity).



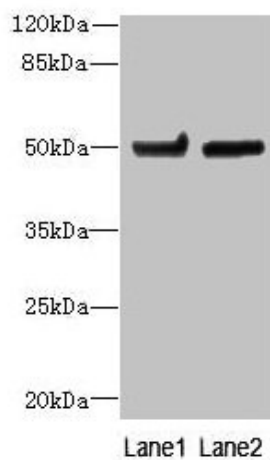
[View online »](#)

Product images:

Immunohistochemistry of paraffin-embedded human colon cancer using TA387353 at dilution of 1:100



Immunohistochemistry of paraffin-embedded human prostate cancer using TA387353 at dilution of 1:100

**Western blot**

All lanes: TUBB6 antibody at 4 μ g/ml

Lane 1: HeLa whole cell lysate

Lane 2: MDA-MB-231 whole cell lysate

Secondary

Goat polyclonal to rabbit IgG at 1/10000 dilution

Predicted band size: 50 kDa

Observed band size: 50 kDa