

## Product datasheet for **TA387352M**

### UQCC2 Rabbit Polyclonal Antibody

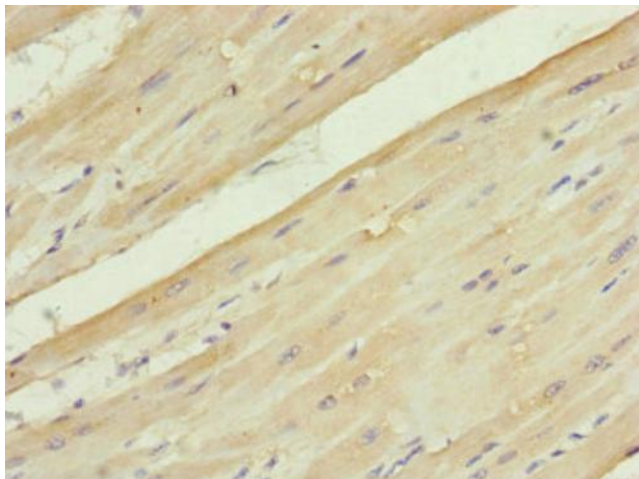
#### Product data:

Product Type:	Primary Antibodies
Applications:	IHC, WB
Recommended Dilution:	Recommended dilution: WB:1:1000-1:5000, IHC:1:20-1:200
Reactivity:	Human
Host:	Rabbit
Isotype:	IgG
Clonality:	Polyclonal
Immunogen:	Recombinant Human Ubiquinol-cytochrome-c reductase complex assembly factor 2 protein (14-126AA)
Formulation:	PBS with 0.02% sodium azide, 50% glycerol, pH7.3.
Concentration:	lot specific
Purification:	Antigen Affinity Purified
Conjugation:	Unconjugated
Storage:	Upon receipt, store at -20°C or -80°C. Avoid repeated freeze.
Stability:	1 year from dispatch.
Database Link:	<a href="#">Q9BRT2</a>
Background:	Required for the assembly of the ubiquinol-cytochrome c reductase complex (mitochondrial respiratory chain complex III or cytochrome b-c1 complex). Plays a role in the modulation of respiratory chain activities such as oxygen consumption and ATP production and via its modulation of the respiratory chain activity can regulate skeletal muscle differentiation and insulin secretion by pancreatic beta-cells. Involved in cytochrome b translation and/or stability.

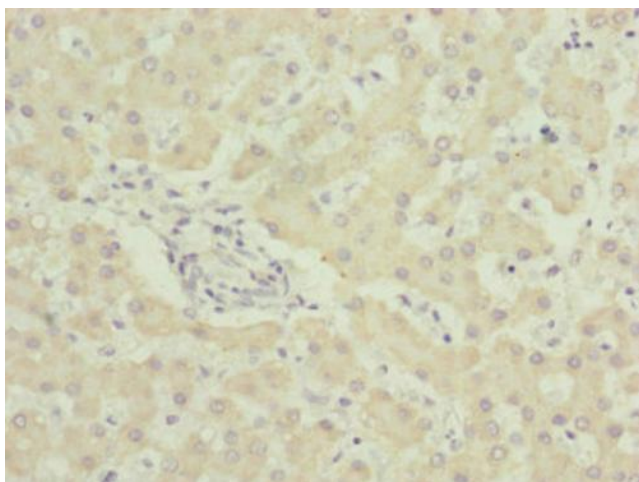


[View online »](#)

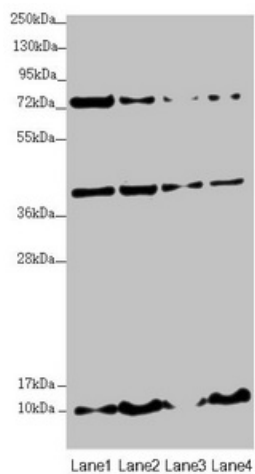
## Product images:



Immunohistochemistry of paraffin-embedded human heart tissue using [TA387352] at dilution of 1:100



Immunohistochemistry of paraffin-embedded human liver tissue using [TA387352] at dilution of 1:100



## Western blot

All lanes: UQCC2 antibody at 3.35  $\mu$ g/ml

Lane 1: HepG2 whole cell lysate

Lane 2: 293T whole cell lysate

Lane 3: Jurkat whole cell lysate

Lane 4: A431 whole cell lysate

## Secondary

Goat polyclonal to rabbit IgG at 1/10000 dilution

Predicted band size: 15 kDa

Observed band size: 15, 40, 80 kDa