

Product datasheet for **TA387348M**

AKAP9 Rabbit Polyclonal Antibody

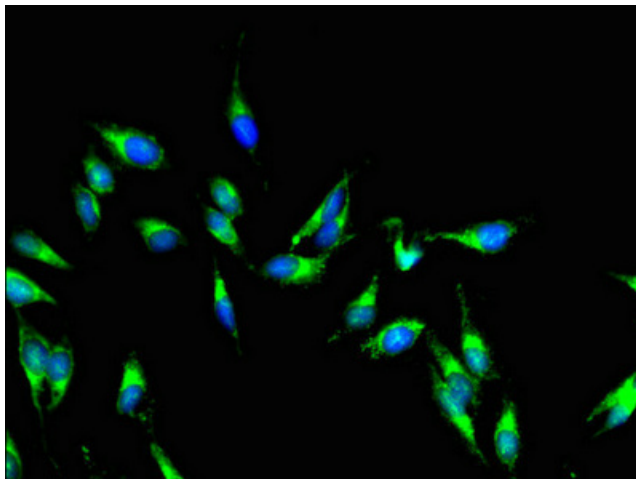
Product data:

Product Type:	Primary Antibodies
Applications:	IF, IHC, WB
Recommended Dilution:	Recommended dilution: WB:1:500-1:5000, IHC:1:20-1:200, IF:1:50-1:200
Reactivity:	Human
Host:	Rabbit
Isotype:	IgG
Clonality:	Polyclonal
Immunogen:	Recombinant Human A-kinase anchor protein 9 protein (71-191AA)
Formulation:	Preservative: 0.03% Proclin 300 Constituents: 50% Glycerol, 0.01M PBS, pH 7.4
Concentration:	lot specific
Purification:	>95%, Protein G purified
Conjugation:	Unconjugated
Storage:	Upon receipt, store at -20°C or -80°C. Avoid repeated freeze.
Stability:	1 year from dispatch.
Database Link:	Q99996
Background:	Scaffolding protein that assembles several protein kinases and phosphatases on the centrosome and Golgi apparatus. Required to maintain the integrity of the Golgi apparatus (PubMed:10202149, PubMed:15047863). Recruited to the Golgi apparatus by GM130/GOLGA2 and is required for microtubule nucleation at the cis-side of the Golgi apparatusGM130/GOLGA2.

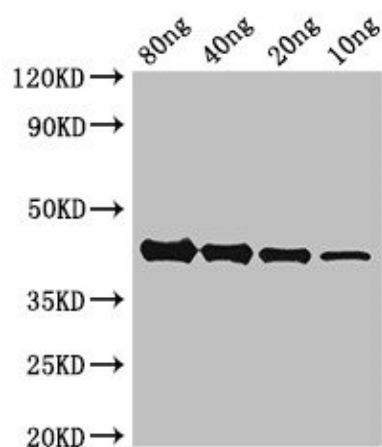


[View online »](#)

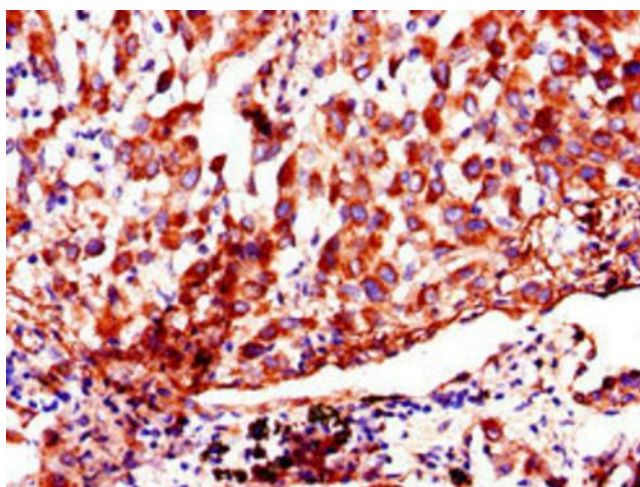
Product images:



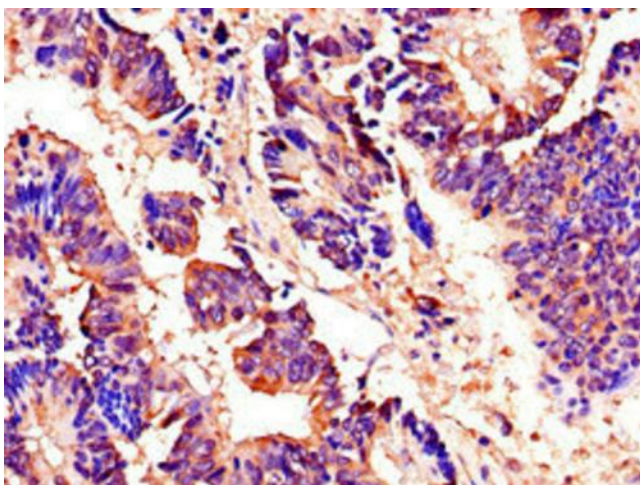
Immunofluorescent analysis of HeLa cells using [TA387348] at dilution of 1:100 and Alexa Fluor 488-conjugated AffiniPure Goat Anti-Rabbit IgG(H+L)



Western Blot
Positive WB detected in Recombinant protein
All lanes: AKAP9 antibody at 2.5µg/ml
Secondary
Goat polyclonal to rabbit IgG at 1/50000 dilution
predicted band size: 44 kDa
observed band size: 44 kDa



Immunohistochemistry of paraffin-embedded human lung cancer using [TA387348] at dilution of 1:100



Immunohistochemistry of paraffin-embedded human colon cancer using [TA387348] at dilution of 1:100