

Product datasheet for **TA387344**

RUFY1 Rabbit Polyclonal Antibody

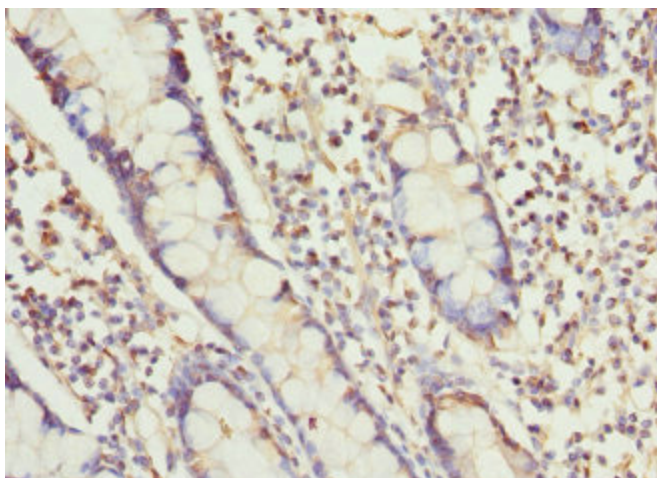
Product data:

Product Type:	Primary Antibodies
Applications:	IHC, WB
Recommended Dilution:	Recommended dilution: WB:1:1000-1:5000, IHC:1:20-1:200
Reactivity:	Mouse, Human
Host:	Rabbit
Isotype:	IgG
Clonality:	Polyclonal
Immunogen:	Recombinant Human RUN and FYVE domain-containing protein 1 protein (439-708AA)
Formulation:	PBS with 0.02% sodium azide, 50% glycerol, pH7.3.
Concentration:	lot specific
Purification:	Antigen Affinity Purified
Conjugation:	Unconjugated
Storage:	Upon receipt, store at -20°C or -80°C. Avoid repeated freeze.
Stability:	1 year from dispatch.
Database Link:	Q96T51
Background:	Binds phospholipid vesicles containing phosphatidylinositol 3-phosphate and participates in early endosomal trafficking.

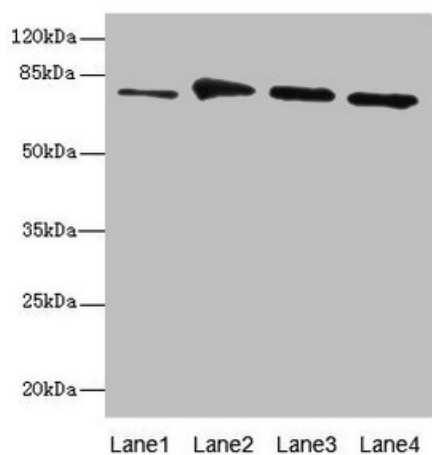


[View online »](#)

Product images:



Immunohistochemistry of paraffin-embedded human small intestine tissue using TA387344 at dilution of 1:100



Western blot
 All lanes: RUFY1 antibody at 7.54µg/ml
 Lane 1: Mouse kidney tissue
 Lane 2: Mouse heart tissue
 Lane 3: Mouse lung tissue
 Lane 4: Mouse gonadal tissue
 Secondary
 Goat polyclonal to rabbit IgG at 1/10000 dilution
 Predicted band size: 80, 70, 45 kDa
 Observed band size: 80 kDa