

Product datasheet for **TA387335M**

DNAJC19 Rabbit Polyclonal Antibody

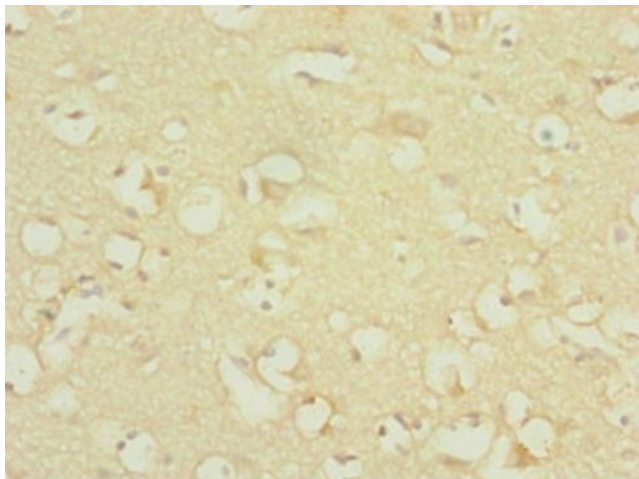
Product data:

Product Type:	Primary Antibodies
Applications:	IHC, WB
Recommended Dilution:	Recommended dilution: WB:1:1000-1:5000, IHC:1:20-1:200
Reactivity:	Mouse, Human
Host:	Rabbit
Isotype:	IgG
Clonality:	Polyclonal
Immunogen:	Recombinant Human Mitochondrial import inner membrane translocase subunit TIM14 protein (1-116AA)
Formulation:	PBS with 0.02% sodium azide, 50% glycerol, pH7.3.
Concentration:	lot specific
Purification:	Antigen Affinity Purified
Conjugation:	Unconjugated
Storage:	Upon receipt, store at -20°C or -80°C. Avoid repeated freeze.
Stability:	1 year from dispatch.
Database Link:	Q96DA6
Background:	Probable component of the PAM complex, a complex required for the translocation of transit peptide-containing proteins from the inner membrane into the mitochondrial matrix in an ATP-dependent manner. May act as a co-chaperone that stimulate the ATP-dependent activity (By similarity).

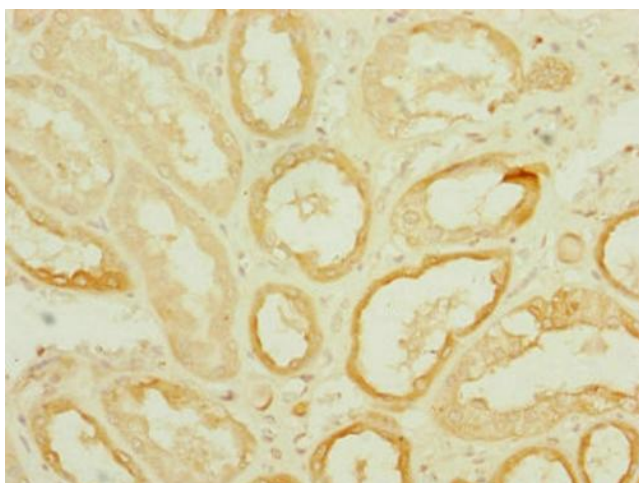


[View online »](#)

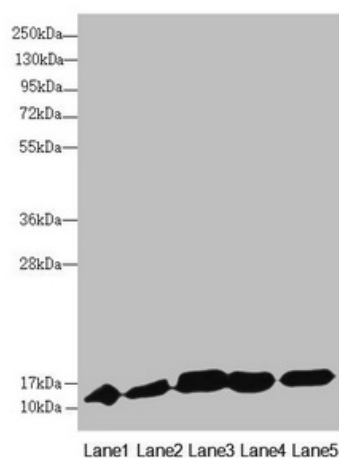
Product images:



Immunohistochemistry of paraffin-embedded human brain tissue using [TA387335] at dilution of 1:100



Immunohistochemistry of paraffin-embedded human kidney tissue using [TA387335] at dilution of 1:100



Western blot

All lanes: DNAJC19 antibody at 0.9µg/ml

Lane 1: Mouse lung tissue

Lane 2: Mouse kidney tissue

Lane 3: A549 whole cell lysate

Lane 4: HL60 whole cell lysate

Lane 5: Hela whole cell lysate

Secondary

Goat polyclonal to rabbit IgG at 1/10000 dilution

Predicted band size: 13, 11 kDa

Observed band size: 13 kDa