

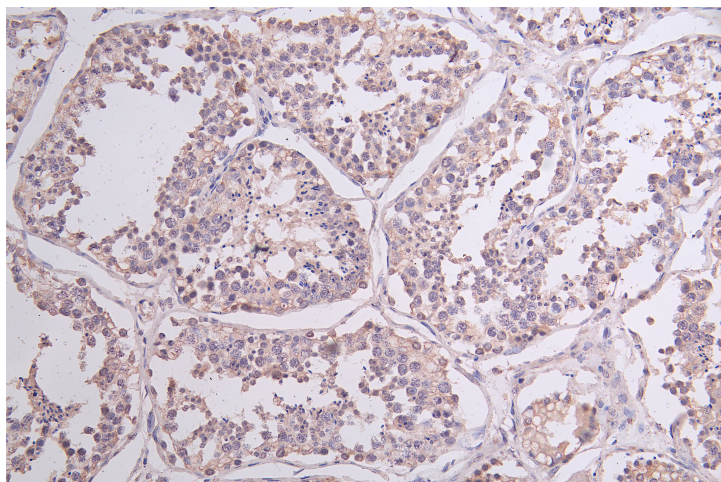
## Product datasheet for **TA387333**

### NSUN4 Rabbit Polyclonal Antibody

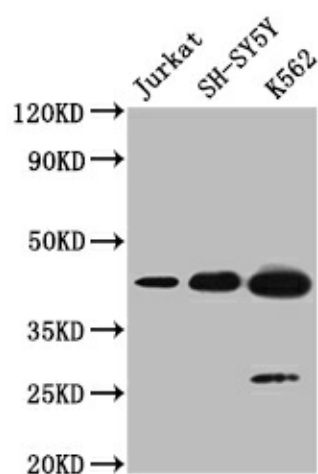
#### Product data:

<b>Product Type:</b>	Primary Antibodies
<b>Applications:</b>	IHC, WB
<b>Recommended Dilution:</b>	Recommended dilution: WB:1:500-1:2000, IHC:1:20-1:200
<b>Reactivity:</b>	Human
<b>Host:</b>	Rabbit
<b>Isotype:</b>	IgG
<b>Clonality:</b>	Polyclonal
<b>Immunogen:</b>	Recombinant Human 5-methylcytosine rRNA methyltransferase NSUN4 protein (26-284AA)
<b>Formulation:</b>	Preservative: 0.03% Proclin 300 Constituents: 50% Glycerol, 0.01M PBS, PH 7.4
<b>Concentration:</b>	lot specific
<b>Purification:</b>	>95%, Protein G purified
<b>Conjugation:</b>	Unconjugated
<b>Storage:</b>	Upon receipt, store at -20°C or -80°C. Avoid repeated freeze.
<b>Stability:</b>	1 year from dispatch.
<b>Database Link:</b>	<a href="#">Q96CB9</a>
<b>Background:</b>	Involved in mitochondrial ribosome assembly. 5-methylcytosine rRNA methyltransferase that probably is involved in mitochondrial ribosome small subunit (SSU) maturation by methylation of mitochondrial 12S rRNA; the function is independent of MTERFD2/MTERF4 and assembled mitochondrial ribosome large subunit (LSU). Targeted to LSU by MTERFD2/MTERF4 and probably is involved in a final step in ribosome biogenesis to ensure that SSU and LSU are assembled. In vitro can methylate 16S rRNA of the LSU; the methylation is enhanced by MTERFD/MTERF4.



**Product images:**

Immunohistochemistry of paraffin-embedded human colon cancer using TA387333 at dilution of 1:100



Western blot

All lanes: NSUN4 antibody at 0.6 $\mu$ g/ml + 293T whole cell lysate

Secondary

Goat polyclonal to rabbit IgG at 1/10000 dilution

Predicted band size: 44, 17, 22, 38 kDa

Observed band size: 44 kDa