

## Product datasheet for **TA387332M**

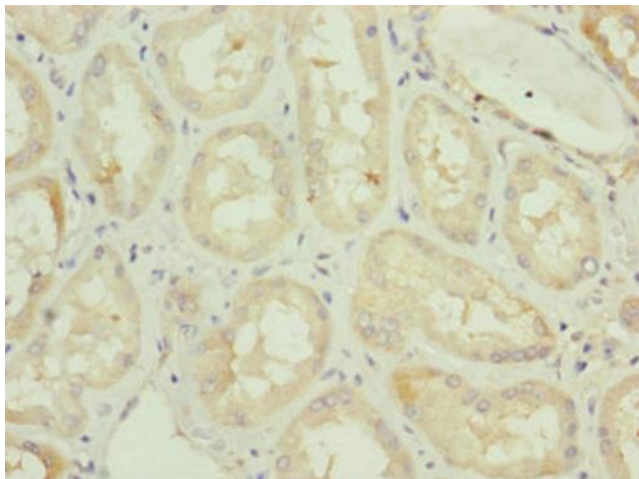
### **TAMM41 Rabbit Polyclonal Antibody**

#### **Product data:**

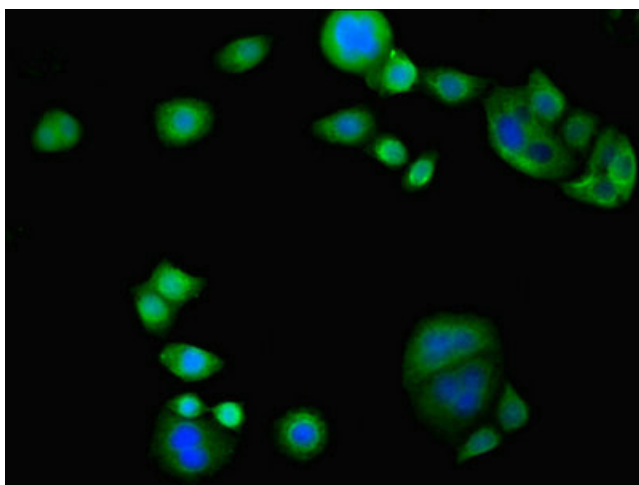
Product Type:	Primary Antibodies
Applications:	IF, IHC, WB
Recommended Dilution:	Recommended dilution: WB:1:500-1:2000, IHC:1:20-1:200, IF:1:50-1:200
Reactivity:	Mouse, Human
Host:	Rabbit
Isotype:	IgG
Clonality:	Polyclonal
Immunogen:	Recombinant Human Phosphatidate cytidyltransferase, mitochondrial protein (161-452AA)
Formulation:	PBS with 0.02% sodium azide, 50% glycerol, pH7.3.
Concentration:	lot specific
Purification:	Antigen Affinity Purified
Conjugation:	Unconjugated
Storage:	Upon receipt, store at -20°C or -80°C. Avoid repeated freeze.
Stability:	1 year from dispatch.
Database Link:	<a href="#">Q96BW9</a>
Background:	Catalyzes the formation of CDP-diacylglycerol (CDP-DAG) from phosphatidic acid (PA) in the mitochondrial inner membrane. Required for the biosynthesis of the dimeric phospholipid cardiolipin, which stabilizes supercomplexes of the mitochondrial respiratory chain in the mitochondrial inner membrane (By similarity).



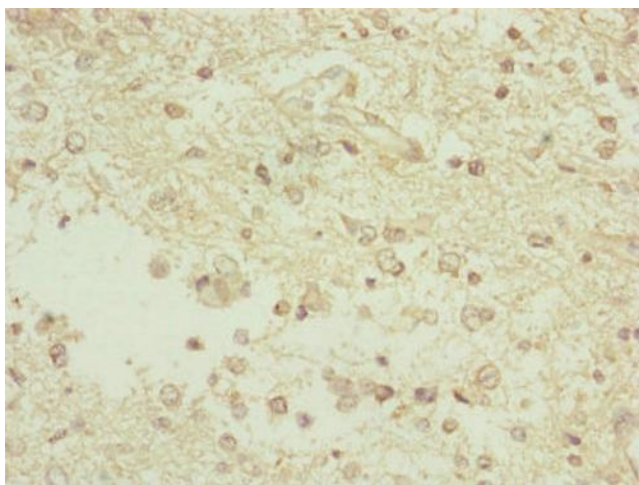
[View online »](#)

**Product images:**

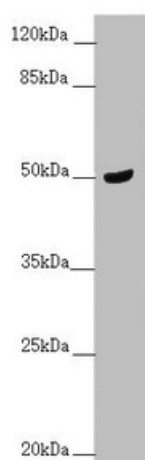
Immunohistochemistry of paraffin-embedded human kidney tissue using [TA387332] at dilution of 1:100



Immunofluorescent analysis of PC-3 cells using [TA387332] at dilution of 1:100 and Alexa Fluor 488-conjugated AffiniPure Goat Anti-Rabbit IgG(H+L)



Immunohistochemistry of paraffin-embedded human glioma using [TA387332] at dilution of 1:100



Western blot  
All lanes: TAMM41 antibody at 1.68 µg/ml +  
Mouse brain tissue  
Secondary  
Goat polyclonal to rabbit IgG at 1/10000 dilution  
Predicted band size: 52, 36, 39 kDa  
Observed band size: 52 kDa