

## Product datasheet for **TA387331M**

### **TMBIM1 Rabbit Polyclonal Antibody**

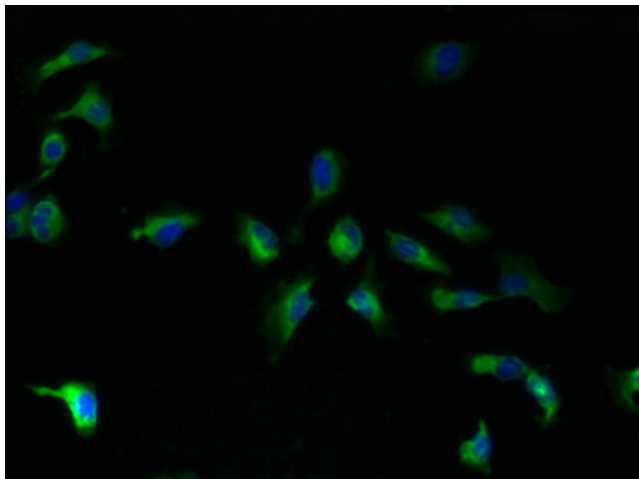
#### **Product data:**

Product Type:	Primary Antibodies
Applications:	IF, WB
Recommended Dilution:	Recommended dilution: WB:1:1000-1:5000, IF:1:50-1:200
Reactivity:	Mouse, Human
Host:	Rabbit
Isotype:	IgG
Clonality:	Polyclonal
Immunogen:	Recombinant Human Protein lifeguard 3 protein (1-109AA)
Formulation:	Preservative: 0.03% Proclin 300 Constituents: 50% Glycerol, 0.01M PBS, PH 7.4
Concentration:	lot specific
Purification:	>95%, Protein G purified
Conjugation:	Unconjugated
Storage:	Upon receipt, store at -20°C or -80°C. Avoid repeated freeze.
Stability:	1 year from dispatch.
Database Link:	<a href="#">Q969X1</a>
Background:	Negatively regulates aortic matrix metalloproteinase-9 (MMP9) production and may play a protective role in vascular remodeling.

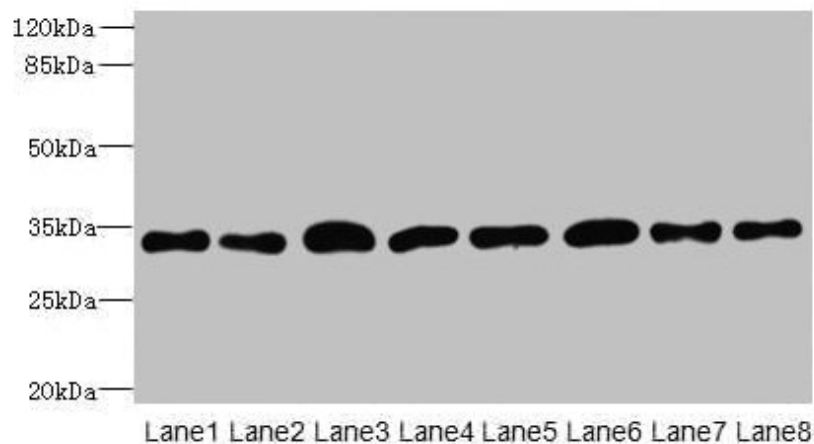


[View online »](#)

## Product images:



Immunofluorescent analysis of U251 cells using [TA387331] at dilution of 1:100 and Alexa Fluor 488-conjugated AffiniPure Goat Anti-Rabbit IgG(H+L)



Western blot  
All lanes: TMBIM1 antibody at 8 $\mu$ g/ml  
Lane 1: U251 whole cell lysate  
Lane 2: K562 whole cell lysate  
Lane 3: A549 whole cell lysate  
Lane 4: MCF-7 whole cell lysate  
Lane 5: Mouse lung tissue  
Lane 6: Mouse liver tissue  
Lane 7: Mouse kidney tissue  
Lane 8: Human placenta tissue  
Secondary  
Goat polyclonal to rabbit IgG at 1/10000 dilution  
Predicted band size: 35 kDa  
Observed band size: 35 kDa