

Product datasheet for **TA387330**

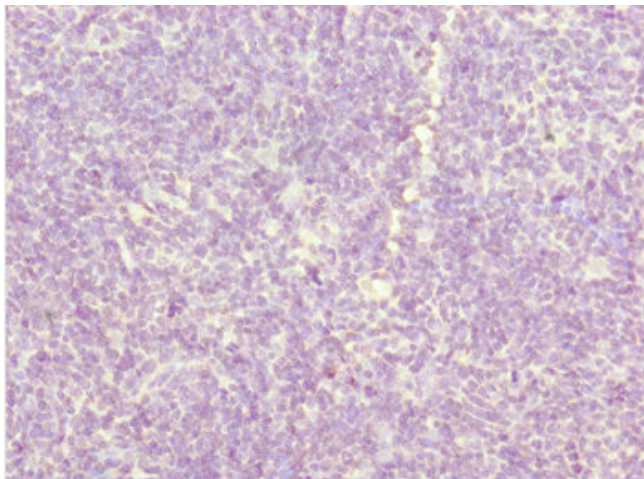
ZDHHC16 Rabbit Polyclonal Antibody

Product data:

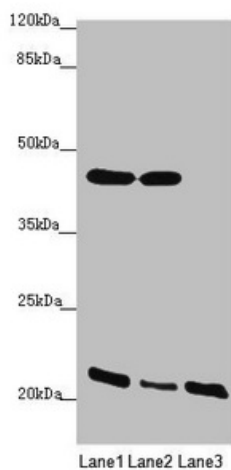
Product Type:	Primary Antibodies
Applications:	IHC, WB
Recommended Dilution:	Recommended dilution: WB:1:1000-1:5000, IHC:1:20-1:200
Reactivity:	Human
Host:	Rabbit
Isotype:	IgG
Clonality:	Polyclonal
Immunogen:	Recombinant Human Palmitoyltransferase ZDHHC16 protein (288-377AA)
Formulation:	PBS with 0.02% sodium azide, 50% glycerol, pH7.3.
Concentration:	lot specific
Purification:	Antigen Affinity Purified
Conjugation:	Unconjugated
Storage:	Upon receipt, store at -20°C or -80°C. Avoid repeated freeze.
Stability:	1 year from dispatch.
Database Link:	Q969W1
Background:	May be involved in apoptosis regulation.



[View online »](#)

Product images:

Immunohistochemistry of paraffin-embedded human thymus tissue using TA387330 at dilution of 1:100

**Western blot**

All lanes: ZDHHC16 antibody at 1.91 $\mu\text{g/ml}$

Lane 1: MCF-7 whole cell lysate

Lane 2: HepG2 whole cell lysate

Lane 3: A375 whole cell lysate

Secondary

Goat polyclonal to rabbit IgG at 1/10000 dilution

Predicted band size: 44, 42, 39, 35 kDa

Observed band size: 44, 22 kDa