

Product datasheet for **TA387323M**

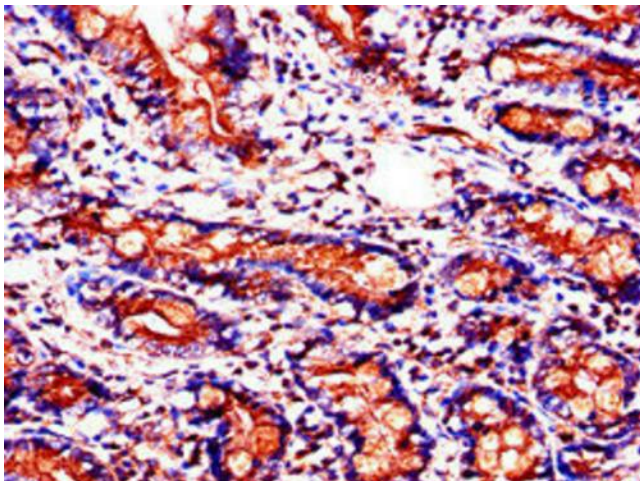
SLC37A2 Rabbit Polyclonal Antibody

Product data:

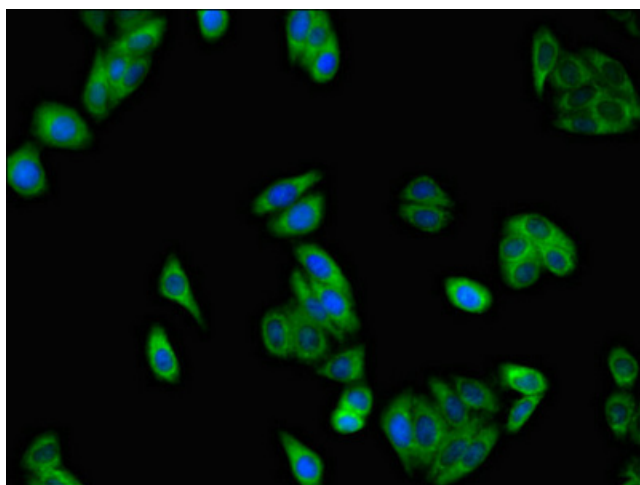
Product Type:	Primary Antibodies
Applications:	IF, IHC, WB
Recommended Dilution:	Recommended dilution: WB:1:500-1:5000, IHC:1:20-1:200, IF:1:50-1:200
Reactivity:	Mouse, Human
Host:	Rabbit
Isotype:	IgG
Clonality:	Polyclonal
Immunogen:	Recombinant Human Glucose-6-phosphate exchanger SLC37A2 protein (46-84AA)
Formulation:	Preservative: 0.03% Proclin 300 Constituents: 50% Glycerol, 0.01M PBS, PH 7.4
Concentration:	lot specific
Purification:	>95%, Protein G purified
Conjugation:	Unconjugated
Storage:	Upon receipt, store at -20°C or -80°C. Avoid repeated freeze.
Stability:	1 year from dispatch.
Database Link:	Q8TED4
Background:	Inorganic phosphate and glucose-6-phosphate antiporter. May transport cytoplasmic glucose-6-phosphate into the lumen of the endoplasmic reticulum and translocate inorganic phosphate into the opposite direction. Independent of a luminal glucose-6-phosphatase. May not play a role in homeostatic regulation of blood glucose levels.



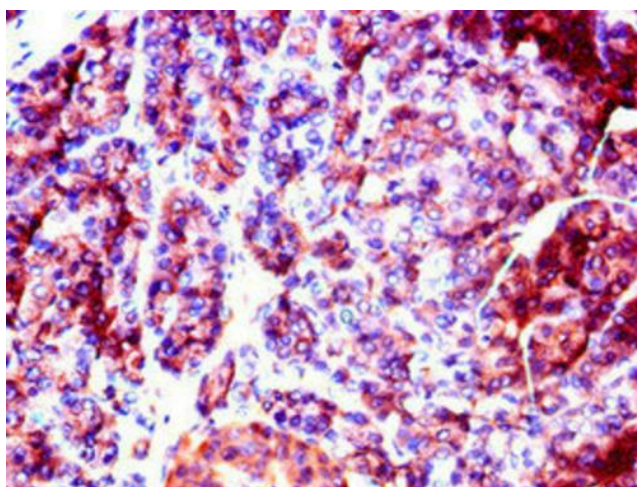
[View online »](#)

Product images:

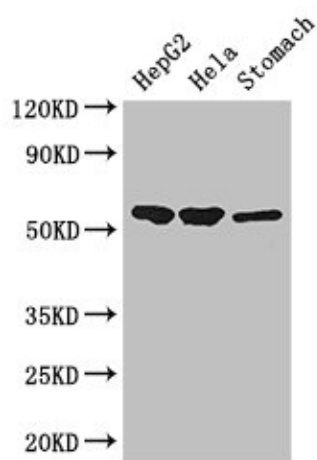
Immunohistochemistry of paraffin-embedded human small intestine tissue using [TA387323] at dilution of 1:100



Immunofluorescent analysis of HepG2 cells using [TA387323] at dilution of 1:100 and Alexa Fluor 488-conjugated AffiniPure Goat Anti-Rabbit IgG(H+L)



Immunohistochemistry of paraffin-embedded human pancreatic tissue using [TA387323] at dilution of 1:100



Western Blot

Positive WB detected in: HepG2 whole cell lysate, HeLa whole cell lysate, Mouse stomach tissue
All lanes: SLC37A2 antibody at 3µg/ml
Secondary
Goat polyclonal to rabbit IgG at 1/50000 dilution
Predicted band size: 55, 43, 14 kDa
Observed band size: 55 kDa