

## Product datasheet for **TA387322**

### LMX1A Rabbit Polyclonal Antibody

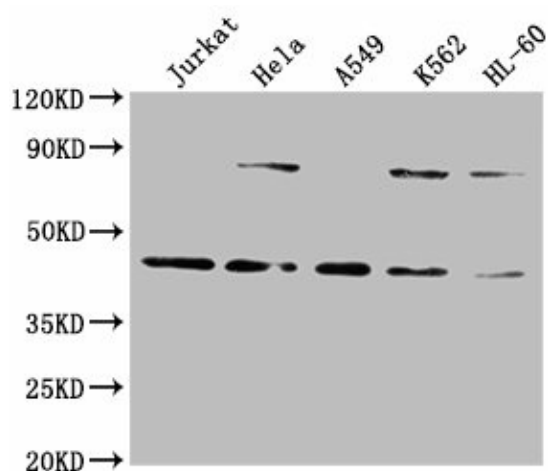
#### Product data:

|                       |  |
|-----------------------|--|
| Product Type:         | Primary Antibodies   |
| Applications:         | IHC, WB  |
| Recommended Dilution: | Recommended dilution: WB:1:1000-1:5000, IHC:1:20-1:200   |
| Reactivity:           | Human  |
| Host:                 | Rabbit   |
| Isotype:              | IgG  |
| Clonality:            | Polyclonal   |
| Immunogen:            | Recombinant Human LIM homeobox transcription factor 1-alpha protein (9-86AA)   |
| Formulation:          | Preservative: 0.03% Proclin 300<br>Constituents: 50% Glycerol, 0.01M PBS, pH 7.4   |
| Concentration:        | lot specific   |
| Purification:         | >95%, Protein G purified   |
| Conjugation:          | Unconjugated   |
| Storage:              | Upon receipt, store at -20°C or -80°C. Avoid repeated freeze.  |
| Stability:            | 1 year from dispatch.  |
| Database Link:        | <a href="#">Q8TE12</a>   |
| Background:           | Acts as a transcriptional activator by binding to an A/T-rich sequence, the FLAT element, in the insulin gene promoter. Required for development of the roof plate and, in turn, for specification of dorsal cell fates in the CNS and developing vertebrae (By similarity). |



[View online »](#)

## Product images:



## Western Blot

Positive WB detected in: Jurkat whole cell lysate, HeLa whole cell lysate, A549 whole cell lysate, K562 whole cell lysate, HL60 whole cell lysate

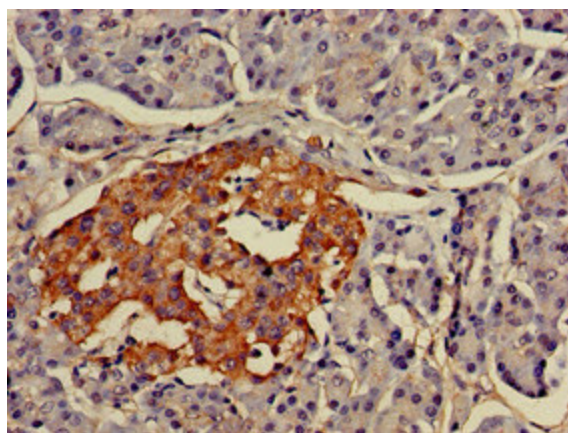
All lanes: LMX1A antibody at 1:2000

Secondary

Goat polyclonal to rabbit IgG at 1/50000 dilution

Predicted band size: 43, 15 kDa

Observed band size: 43 kDa



Immunohistochemistry of paraffin-embedded human pancreatic tissue using TA387322 at dilution of 1:100