

Product datasheet for **TA387321M**

ASAP3 Rabbit Polyclonal Antibody

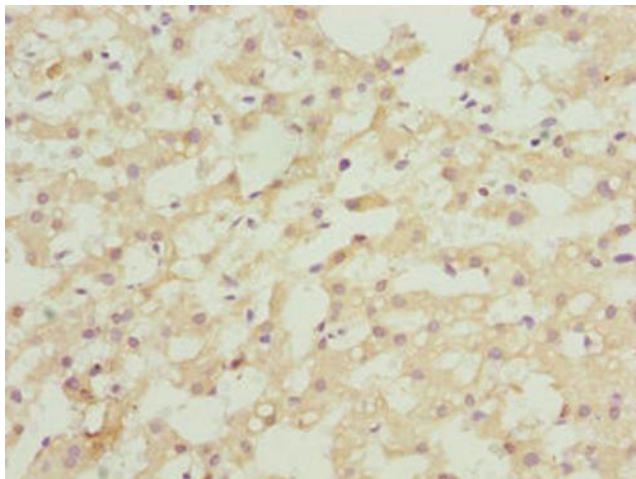
Product data:

Product Type:	Primary Antibodies
Applications:	IHC, WB
Recommended Dilution:	Recommended dilution: WB:1:1000-1:5000, IHC:1:20-1:200
Reactivity:	Human
Host:	Rabbit
Isotype:	IgG
Clonality:	Polyclonal
Immunogen:	Recombinant Human Arf-GAP with SH3 domain, ANK repeat and PH domain-containing protein 3 protein (451-700AA)
Formulation:	Preservative: 0.03% Proclin 300 Constituents: 50% Glycerol, 0.01M PBS, PH 7.4
Concentration:	lot specific
Purification:	Antigen Affinity Purified
Conjugation:	Unconjugated
Storage:	Upon receipt, store at -20°C or -80°C. Avoid repeated freeze.
Stability:	1 year from dispatch.
Database Link:	<u>Q8TDY4</u>
Background:	Promotes cell proliferation.

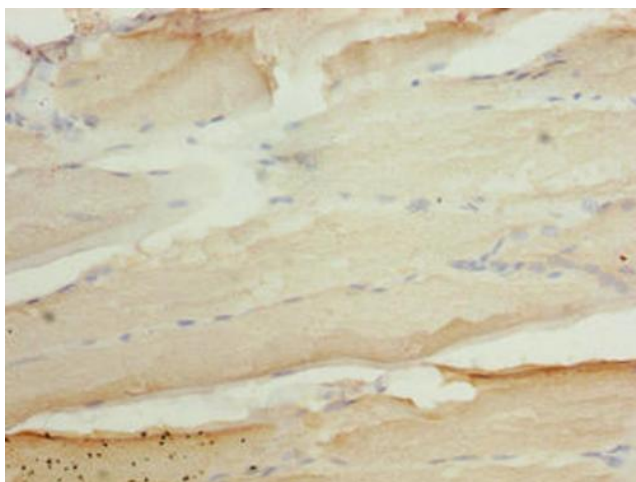


[View online »](#)

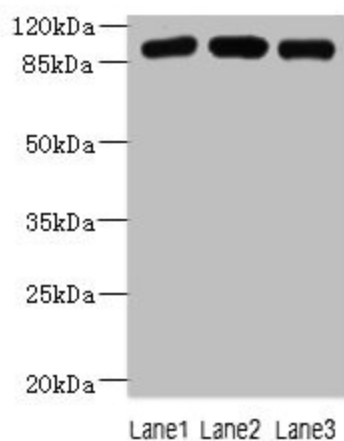
Product images:



Immunohistochemistry of paraffin-embedded human liver cancer using [TA387321] at dilution of 1:100



Immunohistochemistry of paraffin-embedded human skeletal muscle tissue using [TA387321] at dilution of 1:100



Western blot

All lanes: ASAP3 antibody at 1 μ g/ml

Lane 1: A549 whole cell lysate

Lane 2: MCF-7 whole cell lysate

Lane 3: K562 whole cell lysate

Secondary

Goat polyclonal to rabbit IgG at 1/10000 dilution

Predicted band size: 100, 44, 98 kDa

Observed band size: 100 kDa