

Product datasheet for **TA387317M**

NEDD1 Rabbit Polyclonal Antibody

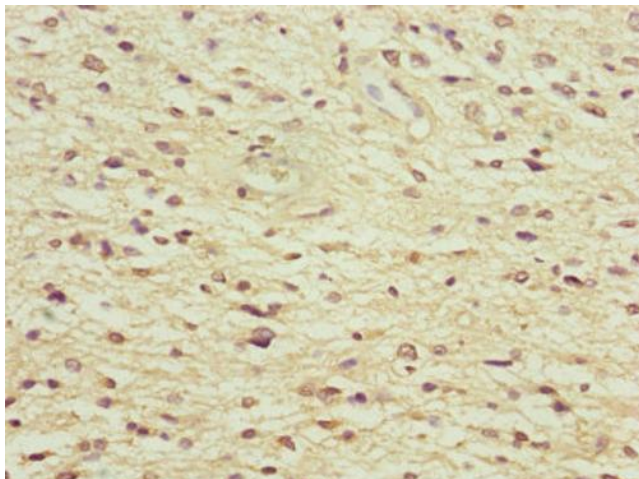
Product data:

Product Type:	Primary Antibodies
Applications:	IHC, IP, WB
Recommended Dilution:	Recommended dilution: WB:1:1000-1:5000, IHC:1:20-1:200, IP:1:200-1:2000
Reactivity:	Mouse, Human
Host:	Rabbit
Isotype:	IgG
Clonality:	Polyclonal
Immunogen:	Recombinant Human Protein NEDD1 protein (411-660AA)
Formulation:	PBS with 0.02% sodium azide, 50% glycerol, pH7.3.
Concentration:	lot specific
Purification:	Antigen Affinity Purified
Conjugation:	Unconjugated
Storage:	Upon receipt, store at -20°C or -80°C. Avoid repeated freeze.
Stability:	1 year from dispatch.
Database Link:	Q8NHV4
Background:	Required for mitosis progression. Promotes the nucleation of microtubules from the spindle.

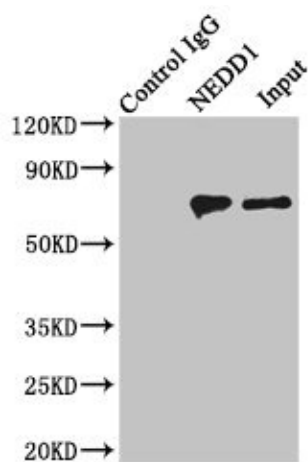


[View online »](#)

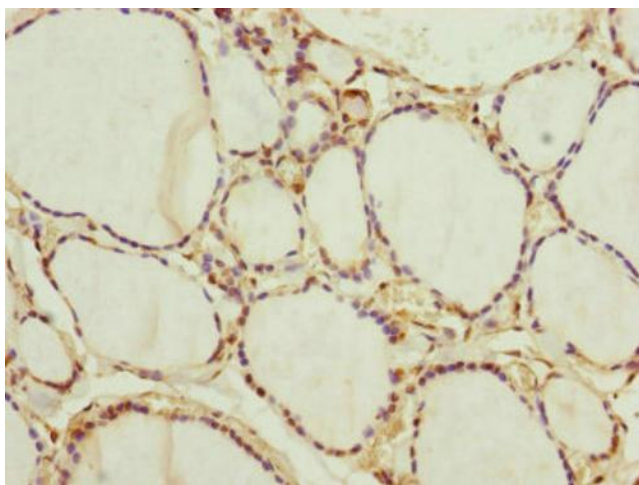
Product images:



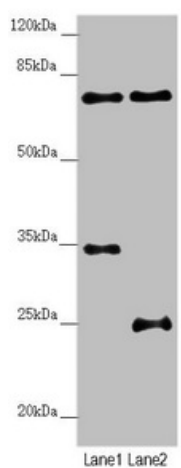
Immunohistochemistry of paraffin-embedded human glioma using [TA387317] at dilution of 1:100



Immunoprecipitating NEDD1 in HeLa whole cell lysate
 Lane 1: Rabbit control IgG instead of (1 μ g) instead of [TA387317] in HeLa whole cell lysate. For western blotting, a HRP-conjugated light chain specific antibody was used as the Secondary antibody (1/50000)
 Lane 2: [TA387317] (4 μ g) + HeLa whole cell lysate (500 μ g)
 Lane 3: HeLa whole cell lysate (20 μ g)



Immunohistochemistry of paraffin-embedded human thyroid tissue using [TA387317] at dilution of 1:100



Western blot
All lanes: NEDD1 antibody at 3.25 μ g/ml
Lane 1: Mouse small intestine tissue
Lane 2: Jurkat whole cell lysate
Secondary
Goat polyclonal to rabbit IgG at 1/10000 dilution
Predicted band size: 72, 63, 73 kDa
Observed band size: 72 kDa