

## Product datasheet for **TA387313**

### SLAIN1 Rabbit Polyclonal Antibody

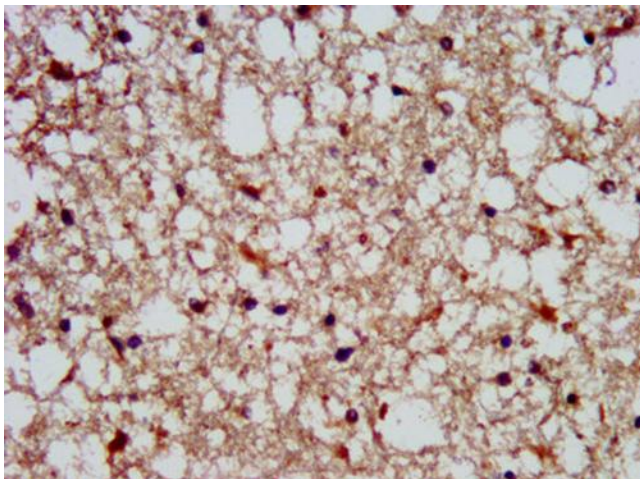
#### Product data:

Product Type:	Primary Antibodies
Applications:	IHC, WB
Recommended Dilution:	Recommended dilution: WB:1:500-1:5000, IHC:1:200-1:500
Reactivity:	Human
Host:	Rabbit
Isotype:	IgG
Clonality:	Polyclonal
Immunogen:	Recombinant Human SLAIN motif-containing protein 1 protein (43-136AA)
Formulation:	Preservative: 0.03% Proclin 300 Constituents: 50% Glycerol, 0.01M PBS, pH 7.4
Concentration:	lot specific
Purification:	>95%, Protein G purified
Conjugation:	Unconjugated
Storage:	Upon receipt, store at -20°C or -80°C. Avoid repeated freeze.
Stability:	1 year from dispatch.
Database Link:	<a href="#">Q8ND83</a>

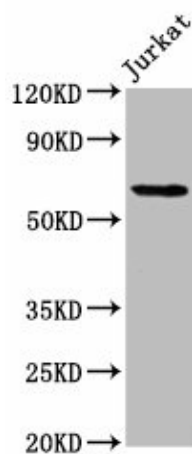


[View online »](#)

## Product images:



IHC image of TA387313 diluted at 1:300 and staining in paraffin-embedded human brain tissue performed on a Leica Bond<sup>TM</sup> system.



Western Blot  
Positive WB detected in: Jurkat whole cell lysate  
All lanes: SLAIN1 antibody at 4.2µg/ml  
Secondary  
Goat polyclonal to rabbit IgG at 1/50000 dilution  
Predicted band size: 61, 34, 21, 48 kDa  
Observed band size: 61 kDa